

NEW ENGLAND ECONOMIC UPDATE

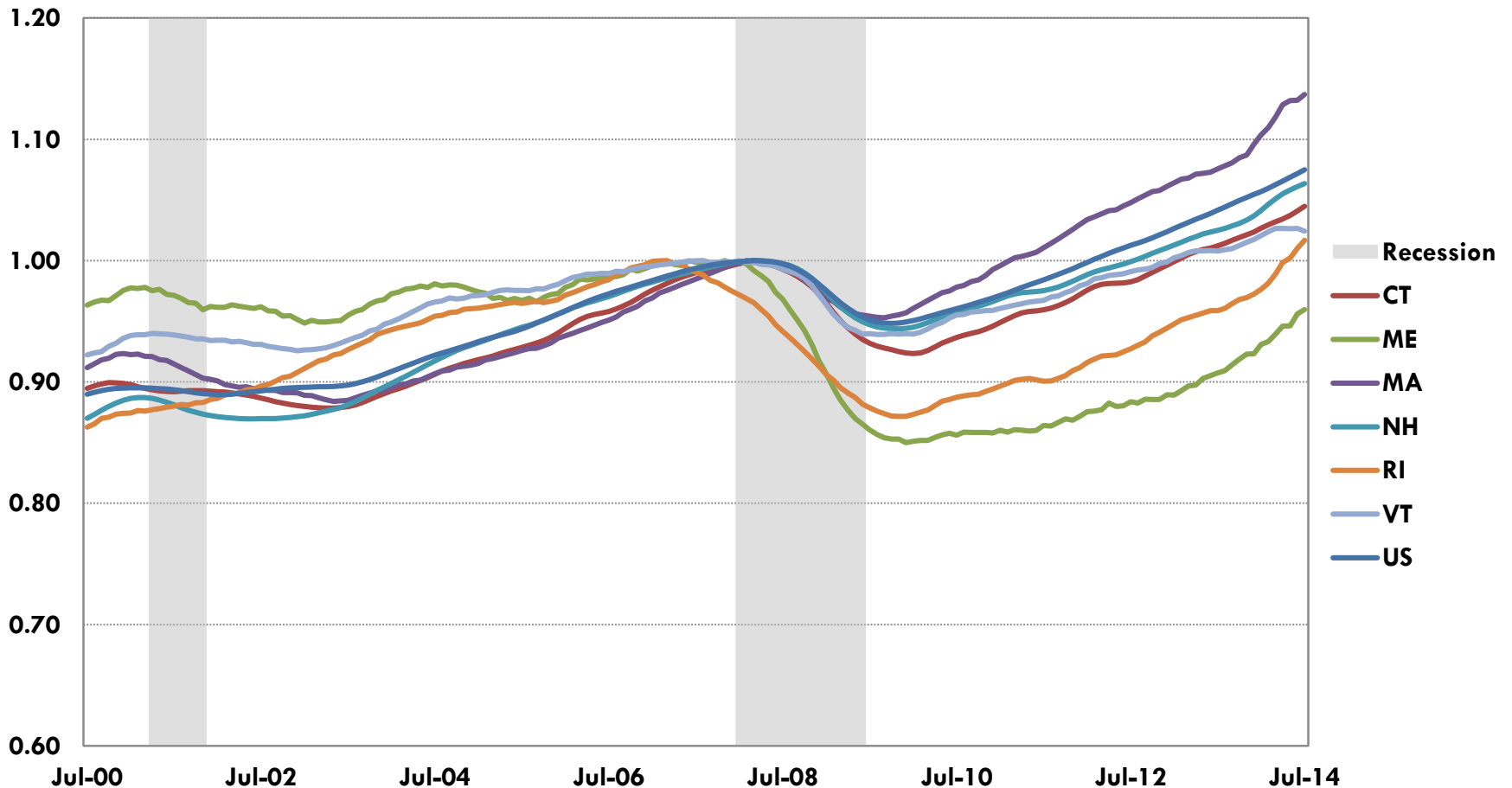
CHART PACKAGE

Prepared on August 27, 2014 for the September 3
New England Advisory Council

Mary Burke
Senior Economist
Federal Reserve Bank of Boston

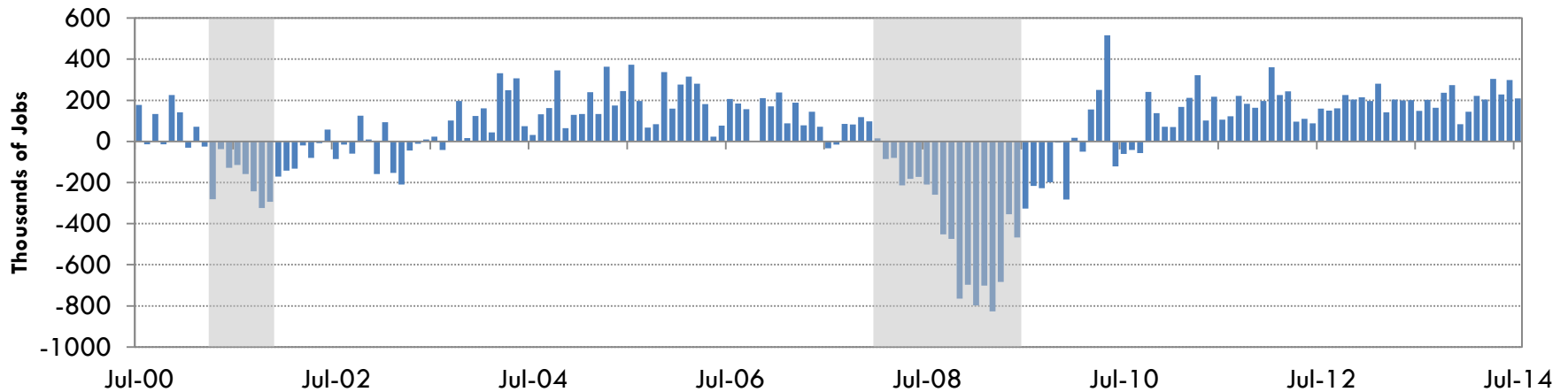
State Coincident Economic Activity Indexes

Indexed to Pre-recession Peaks

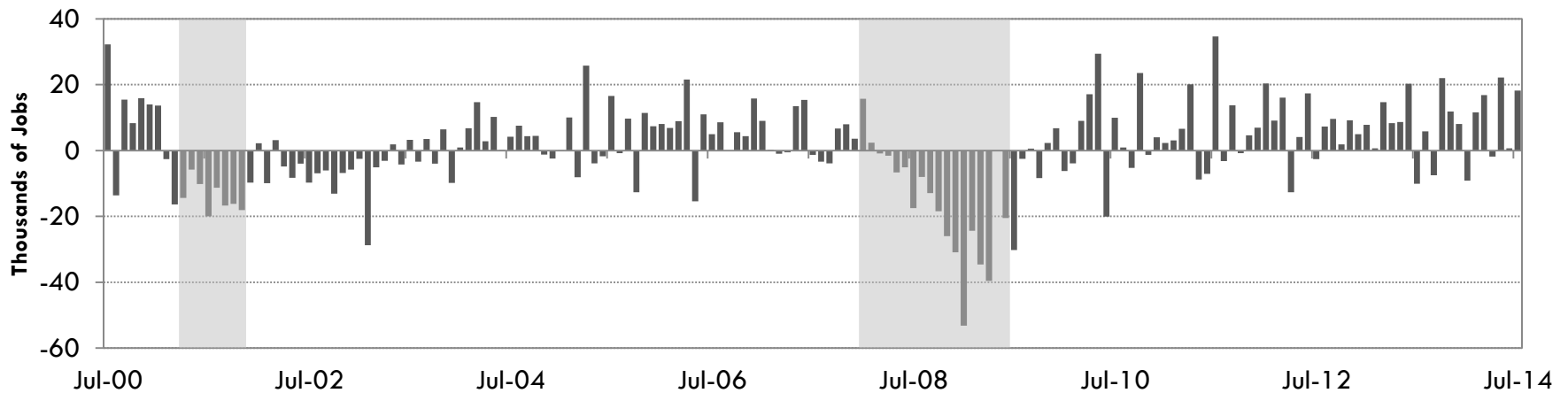


Monthly Employment Change

United States

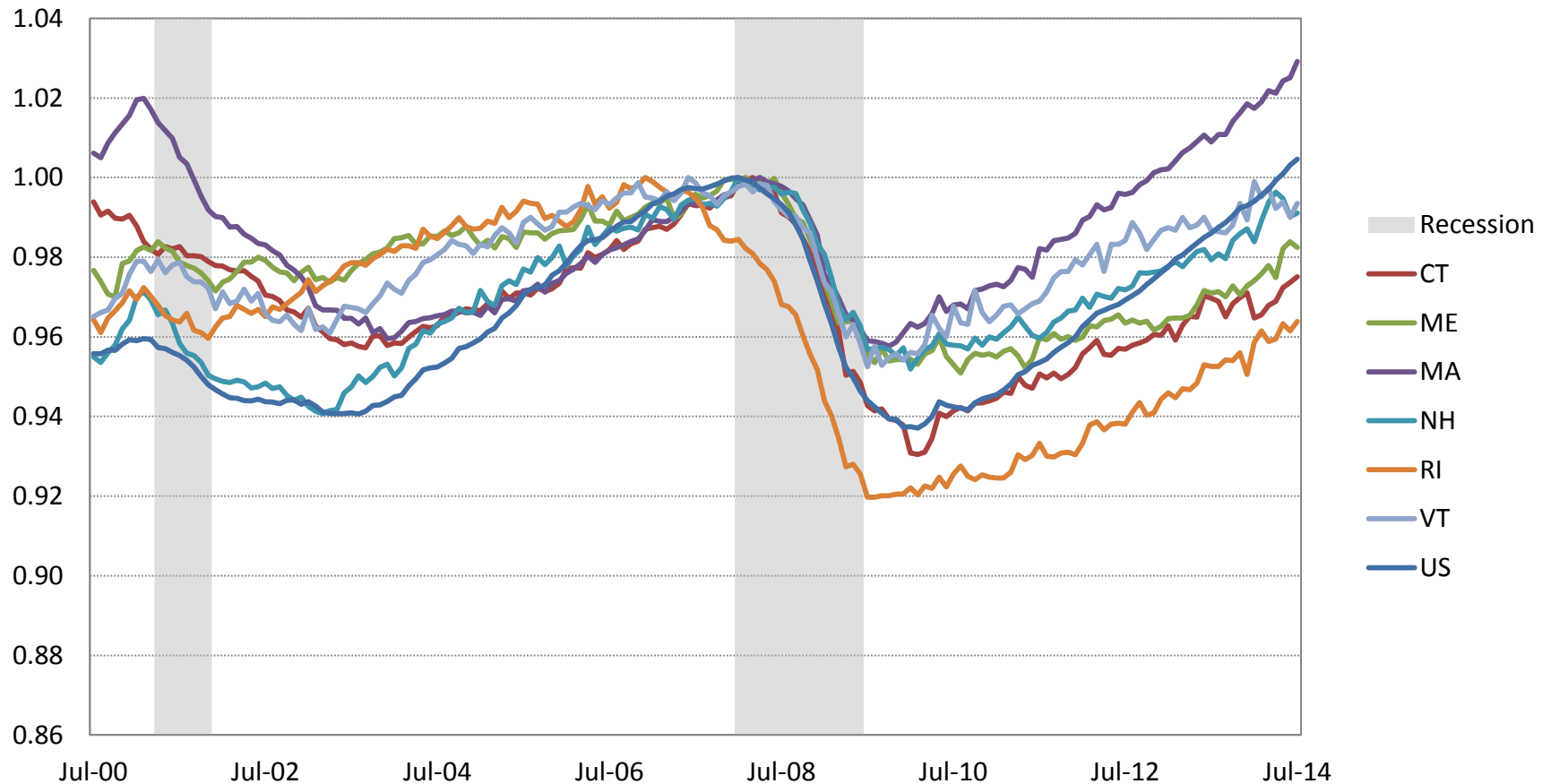


New England



Non-Agricultural Employment

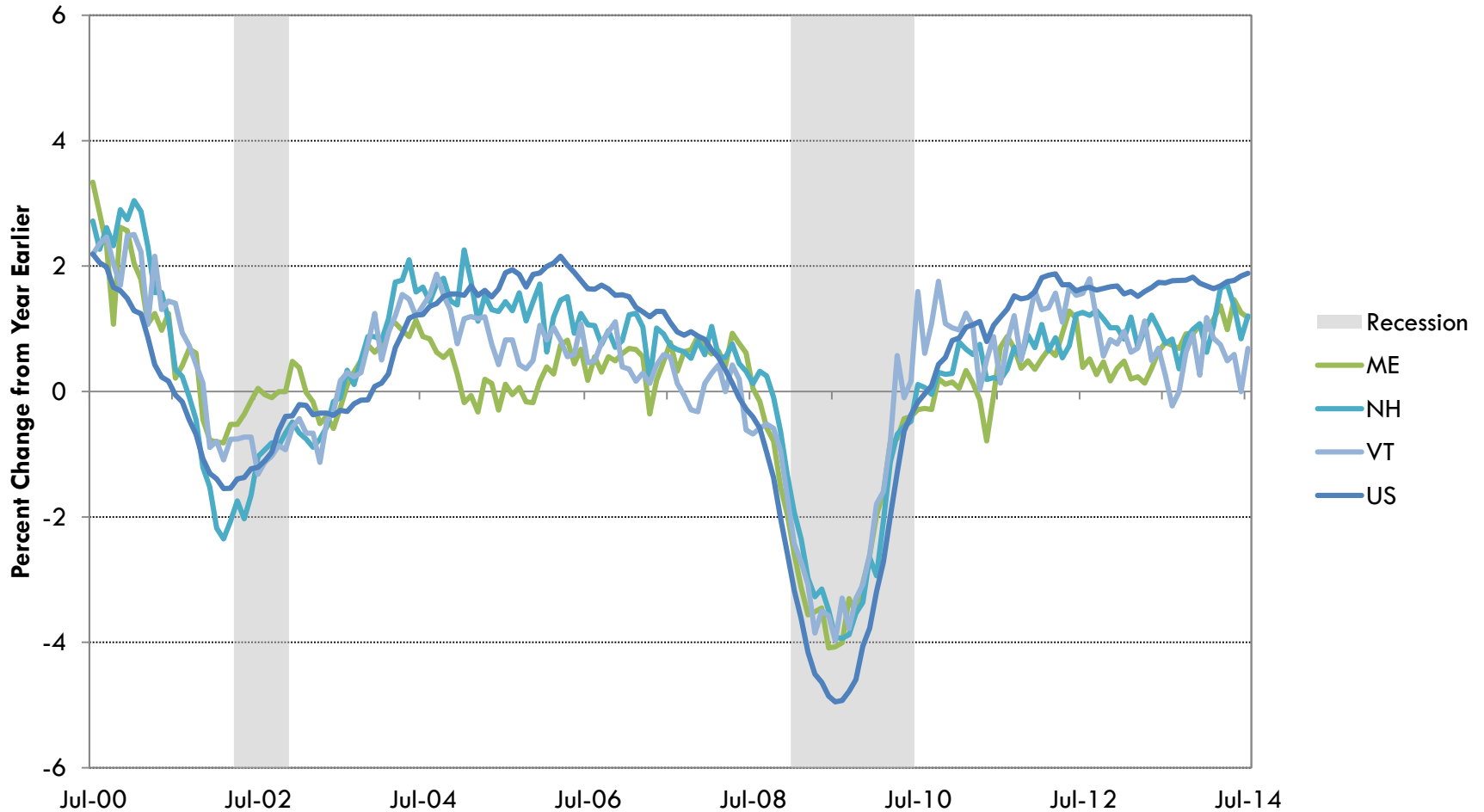
Indexed to Pre-recession Peaks



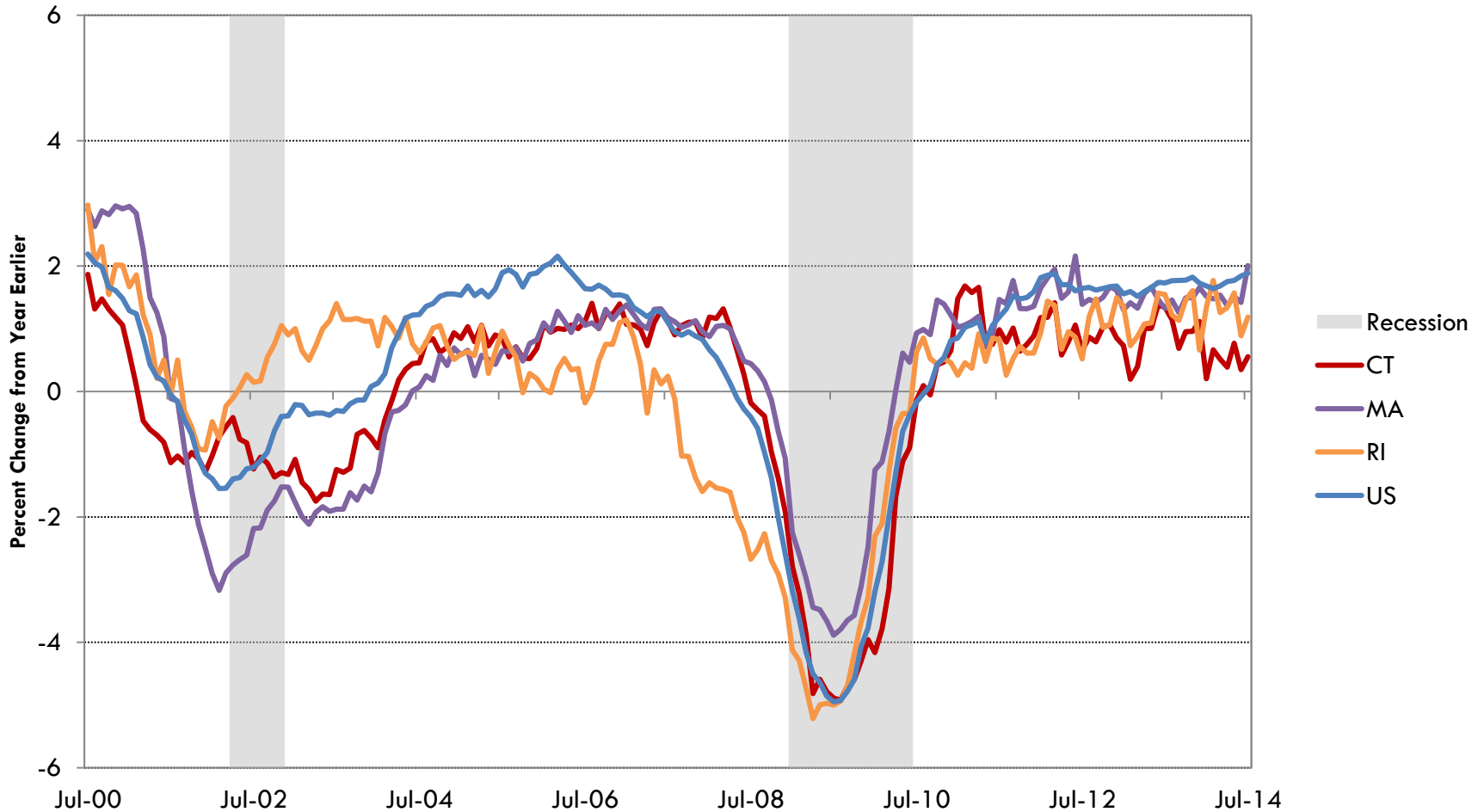
Employment Growth Rates

	Annual Long-term Trend		Last 12 months		Since Peak	
	Percent		Percent	Number	Percent	Number
United States	1.4		1.9	2,570,000	0.5	639,000
New England	0.8		1.4	99,000	0.4	31,900
Connecticut	0.5		0.6	9,200	-2.5	-42,700
Maine	1.2		1.2	7,100	-1.8	-10,900
Massachusetts	0.8		2.0	67,300	2.9	97,100
New Hampshire	1.5		1.2	7,700	-0.9	-5,800
Rhode Island	0.6		1.2	5,600	-3.6	-17,900
Vermont	1.3		0.7	2,100	-0.6	-2,000

Employment Change in Northern New England

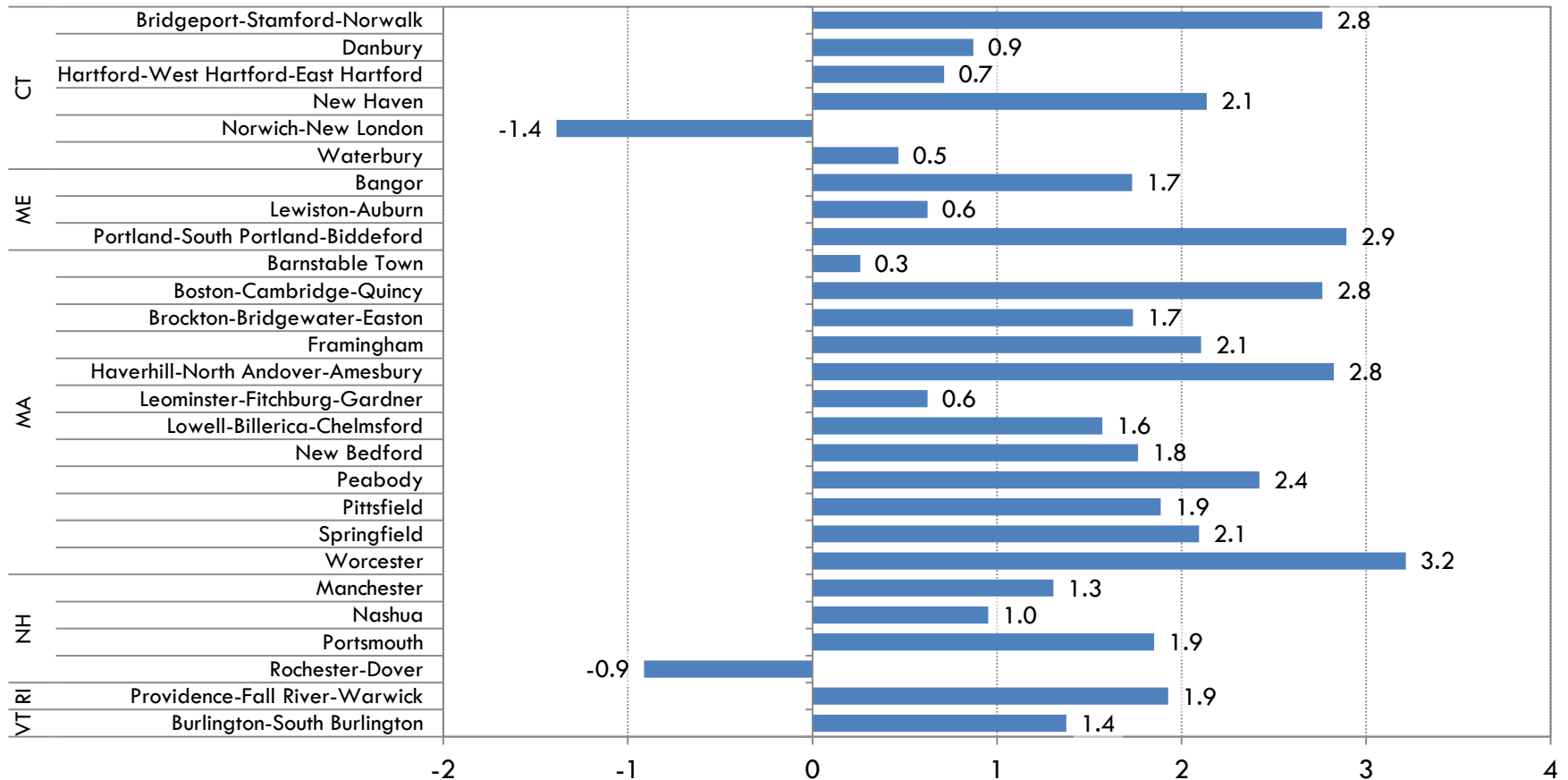


Employment Change in Southern New England



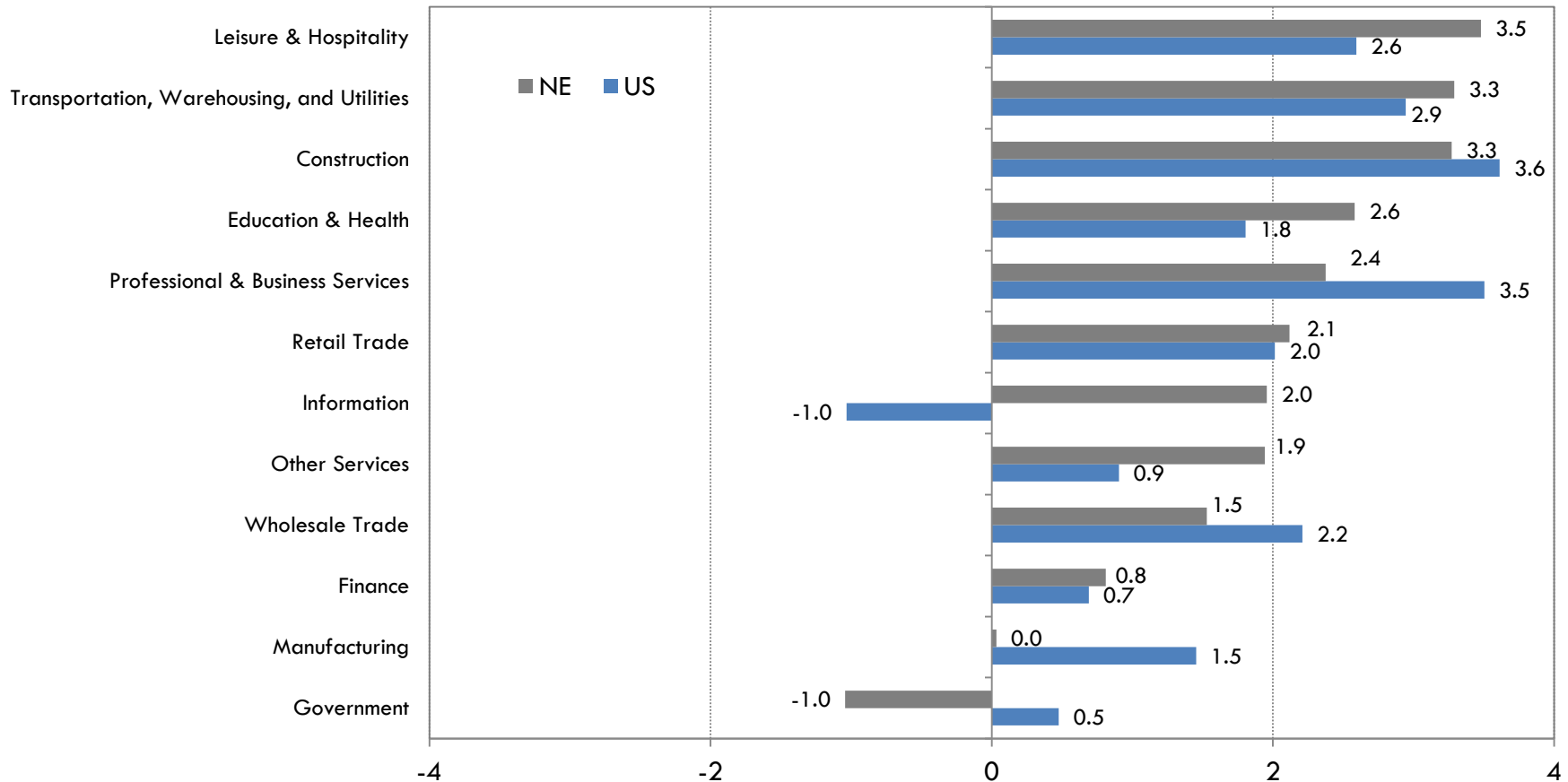
Employment Change in New England Metropolitan Areas

Percent Change, July 2013 - July 2014



Employment Growth by Industry

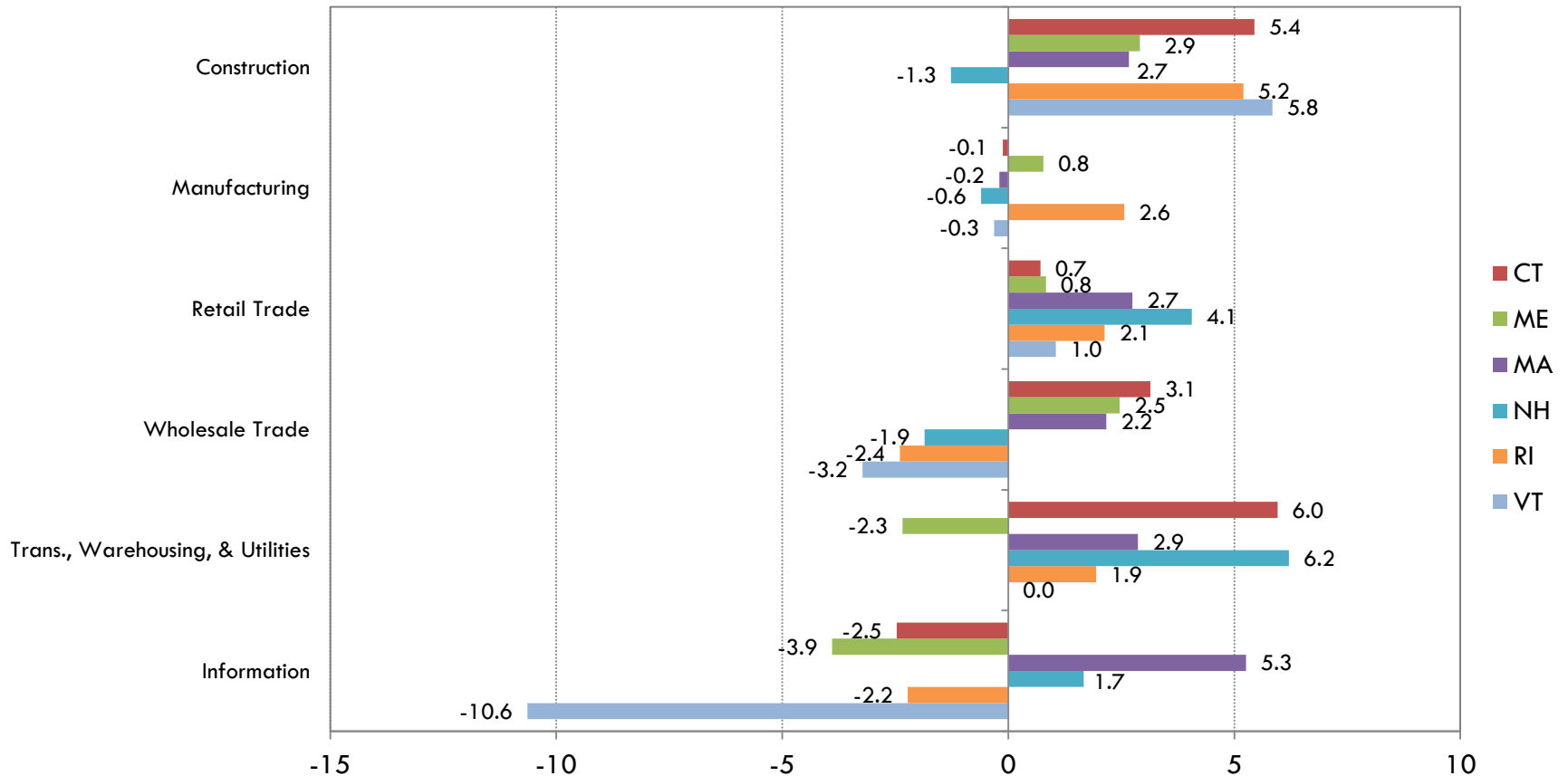
Percent Change, July 2013 - July 2014



Employment Growth by Industry

State Level

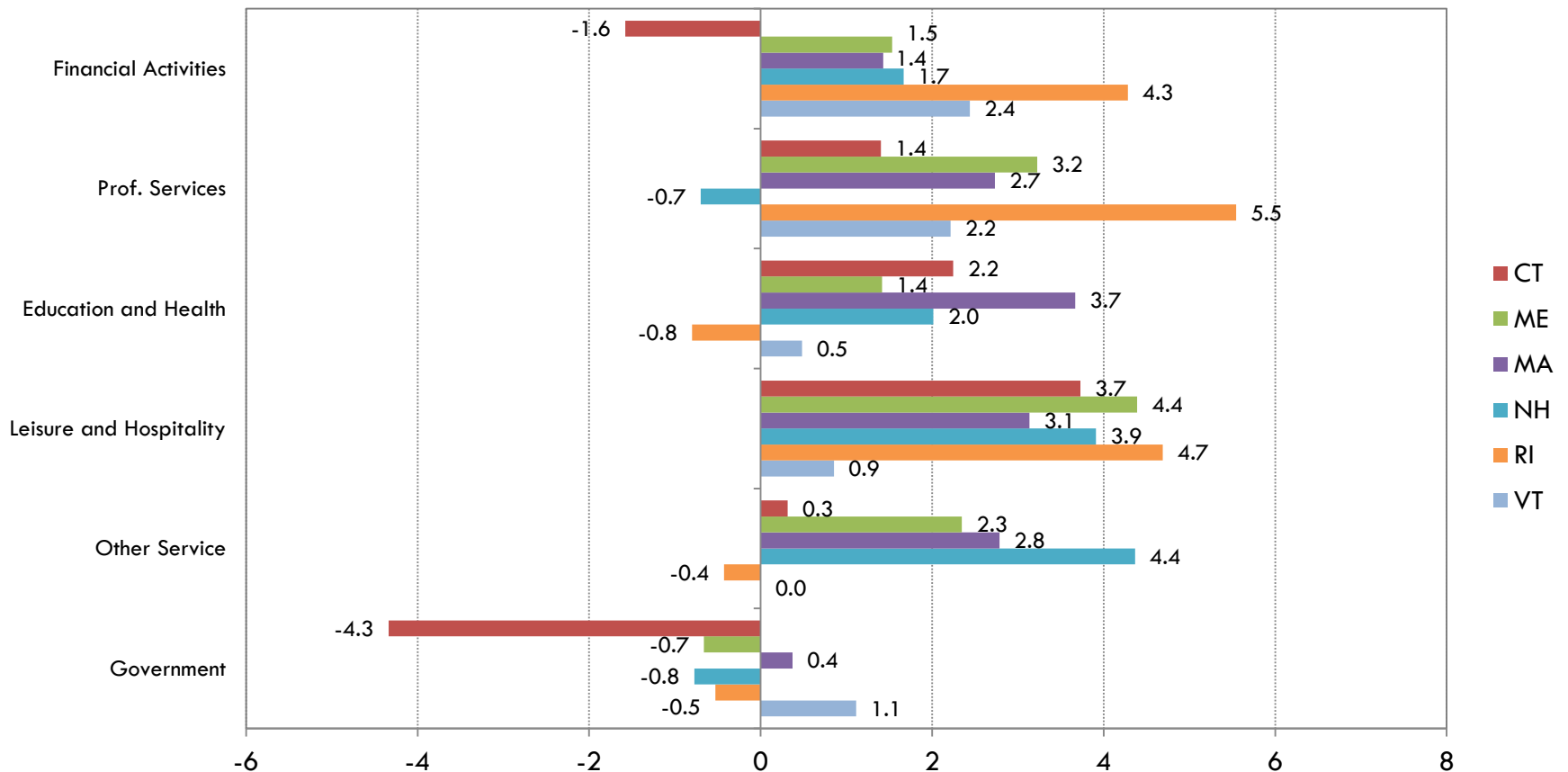
Percent Change, July 2013 - July 2014



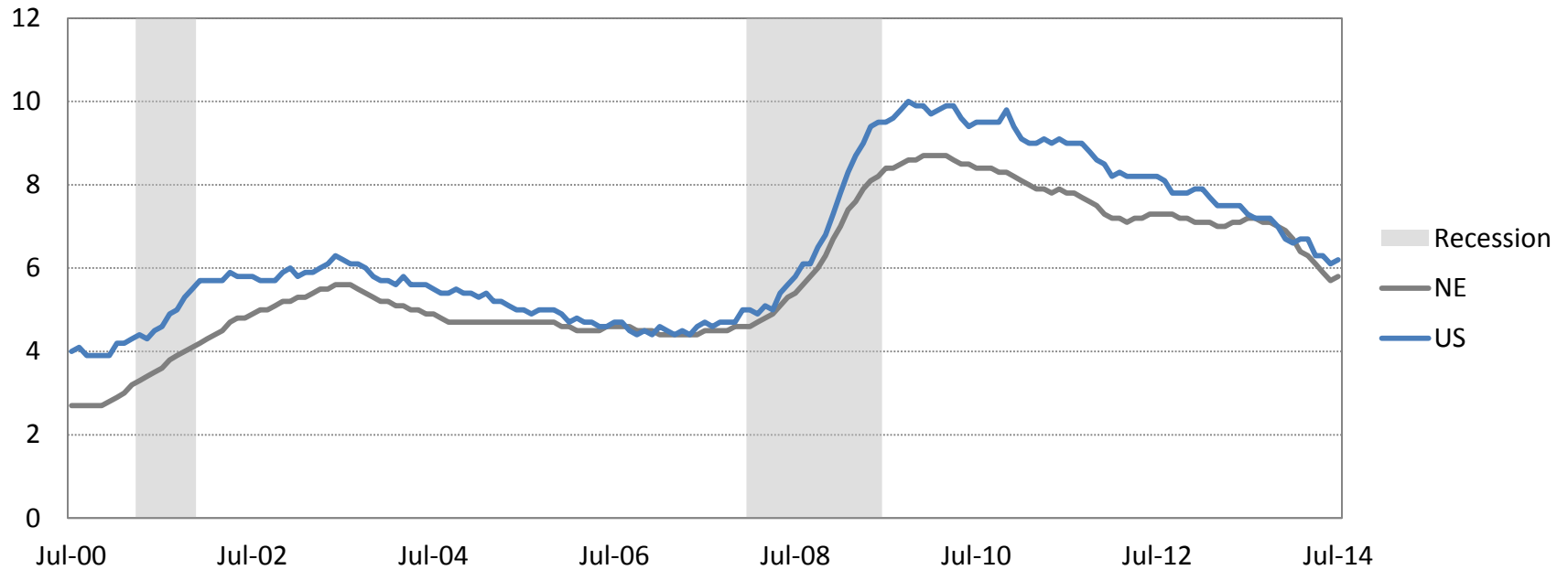
Employment Growth by Industry

State Level

Percent Change, July 2013 - July 2014

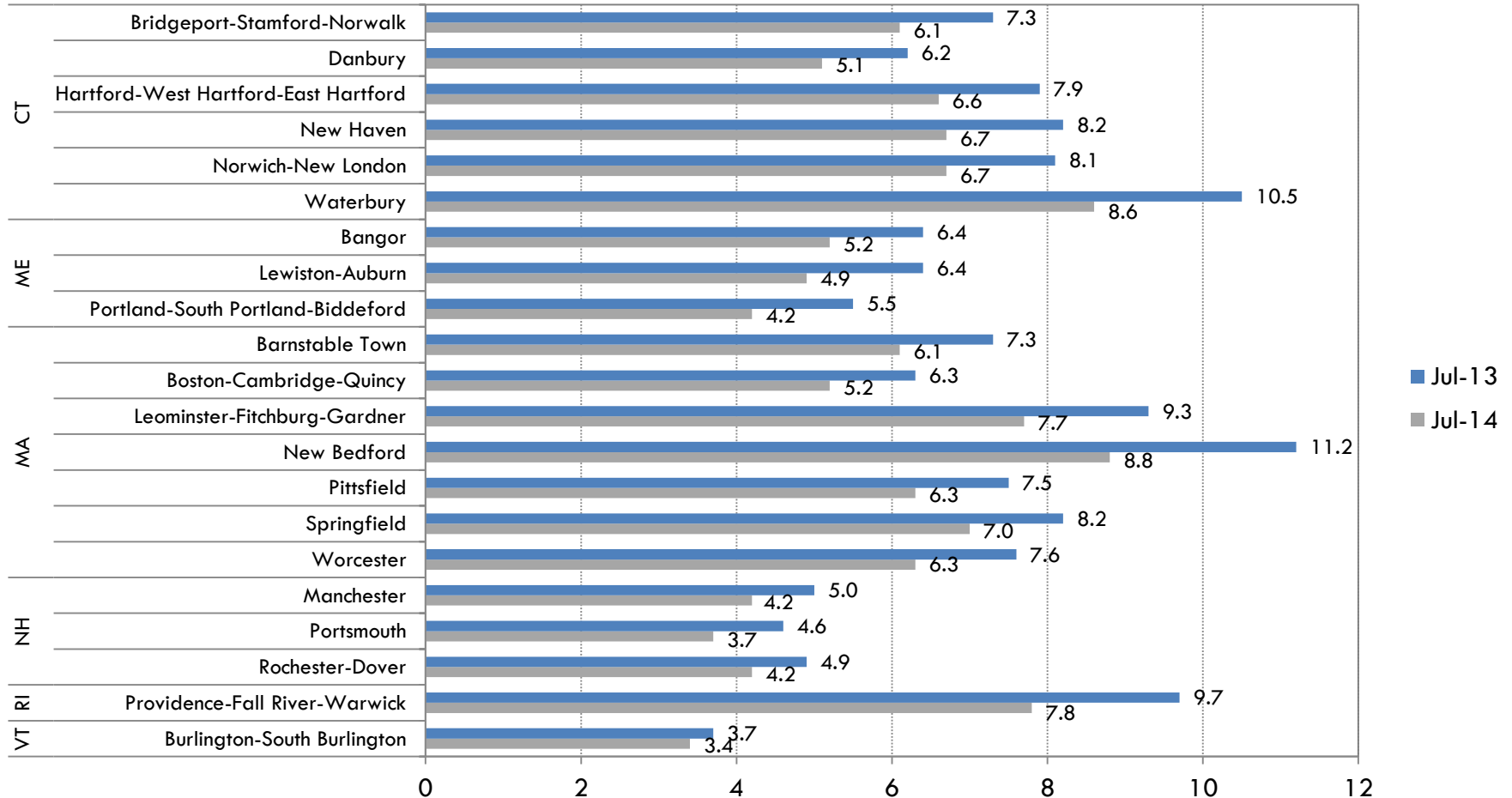


Unemployment Rates

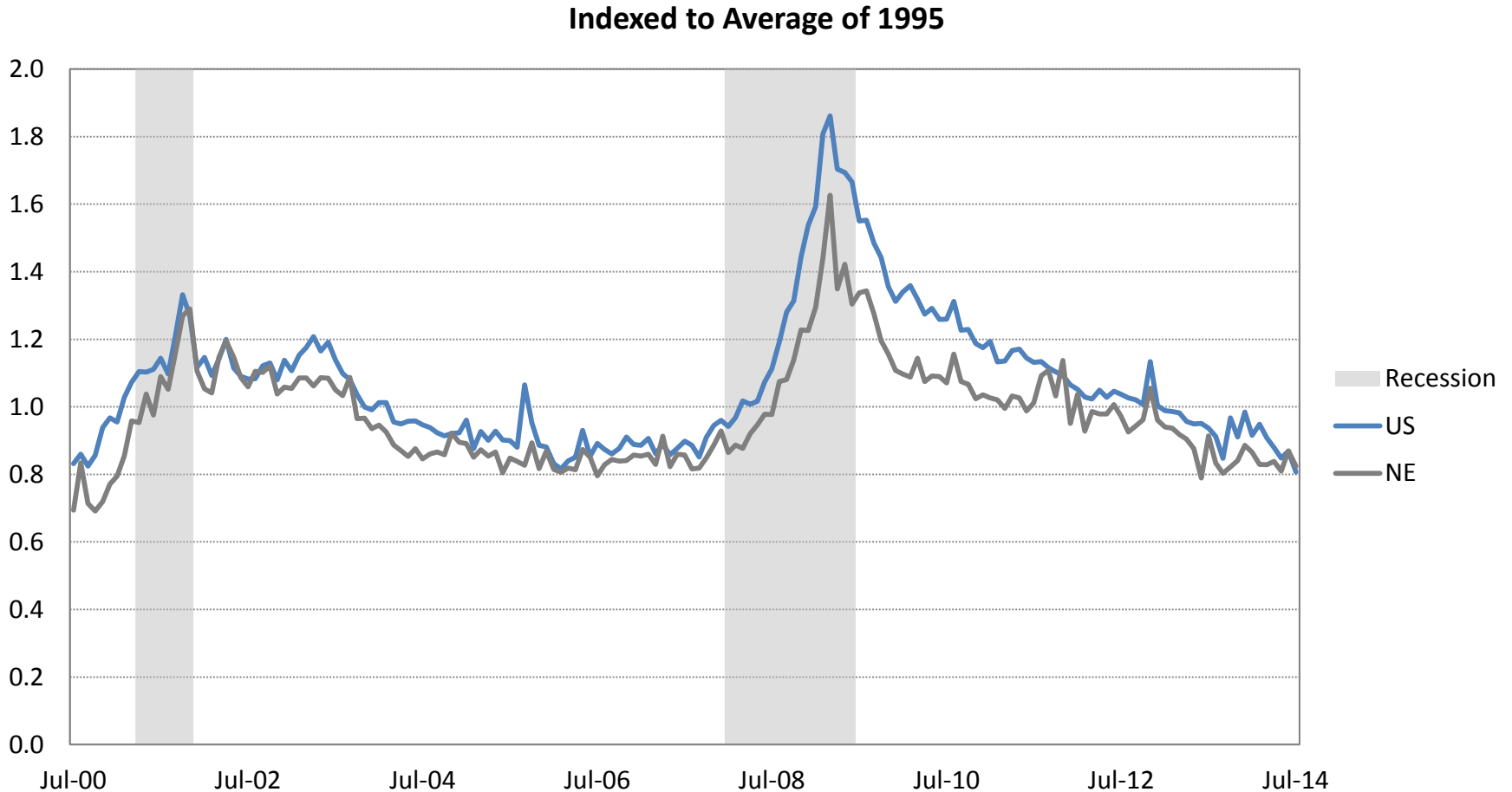


	Jul-13	Jul-14
United States	7.3	6.2
New England	7.2	5.8
Connecticut	7.9	6.6
Maine	6.7	5.5
Massachusetts	7.2	5.6
New Hampshire	5.3	4.4
Rhode Island	9.6	7.7
Vermont	4.5	3.7

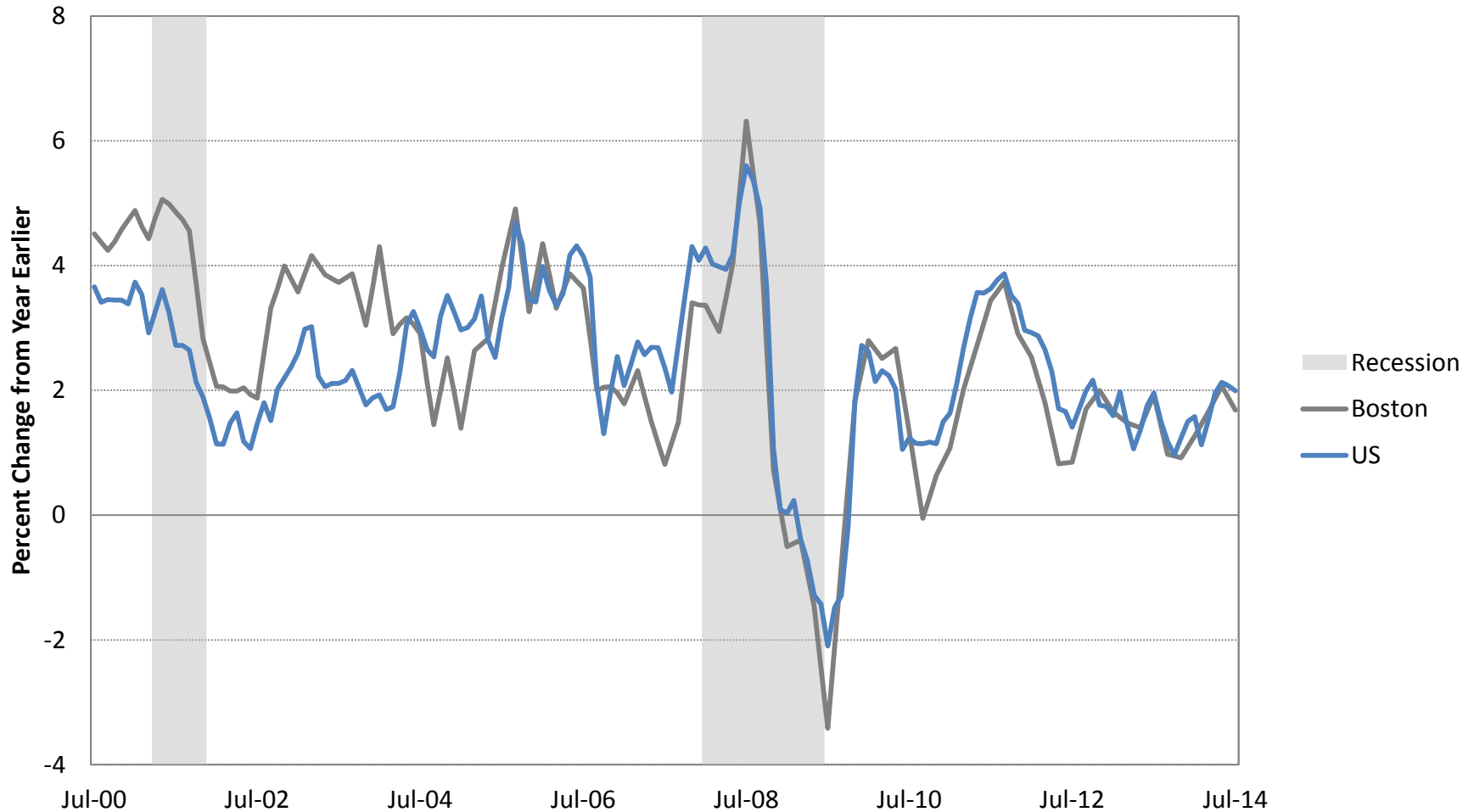
Unemployment Rates in New England by Metropolitan Areas



Initial Claims for Unemployment Insurance

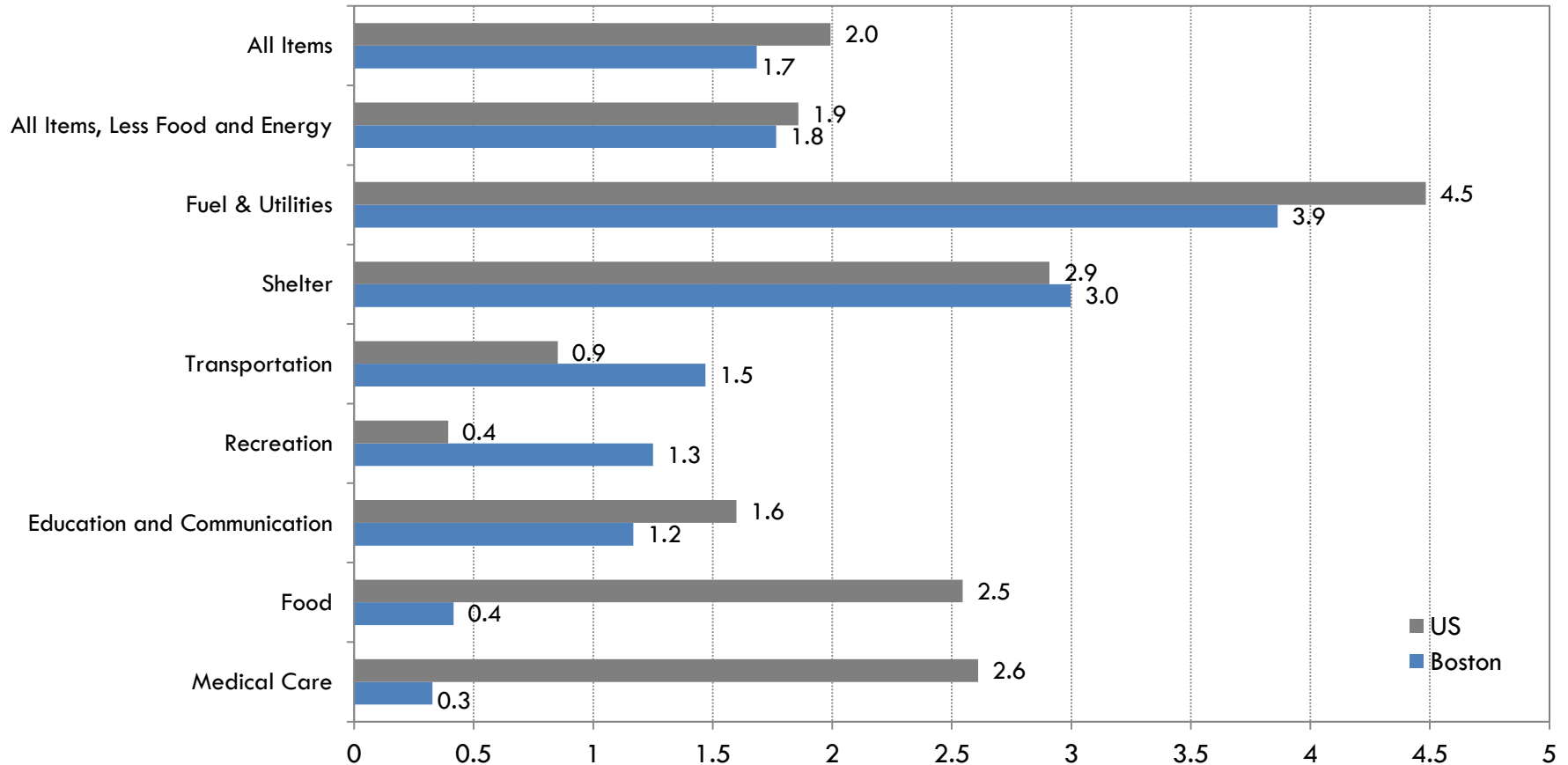


Consumer Price Index



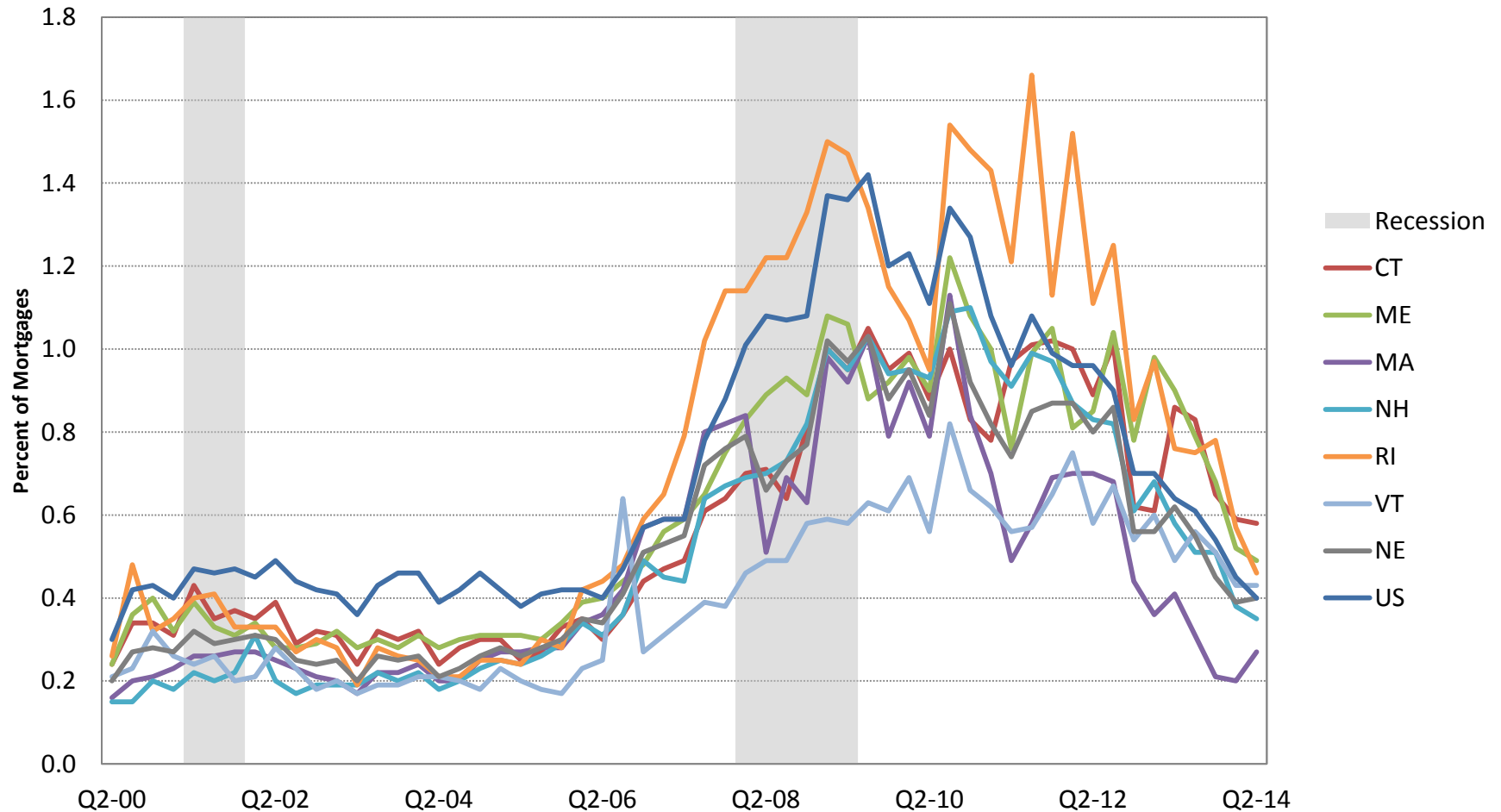
Components of the Consumer Price Index

Percent Change, July 2013 - July 2014

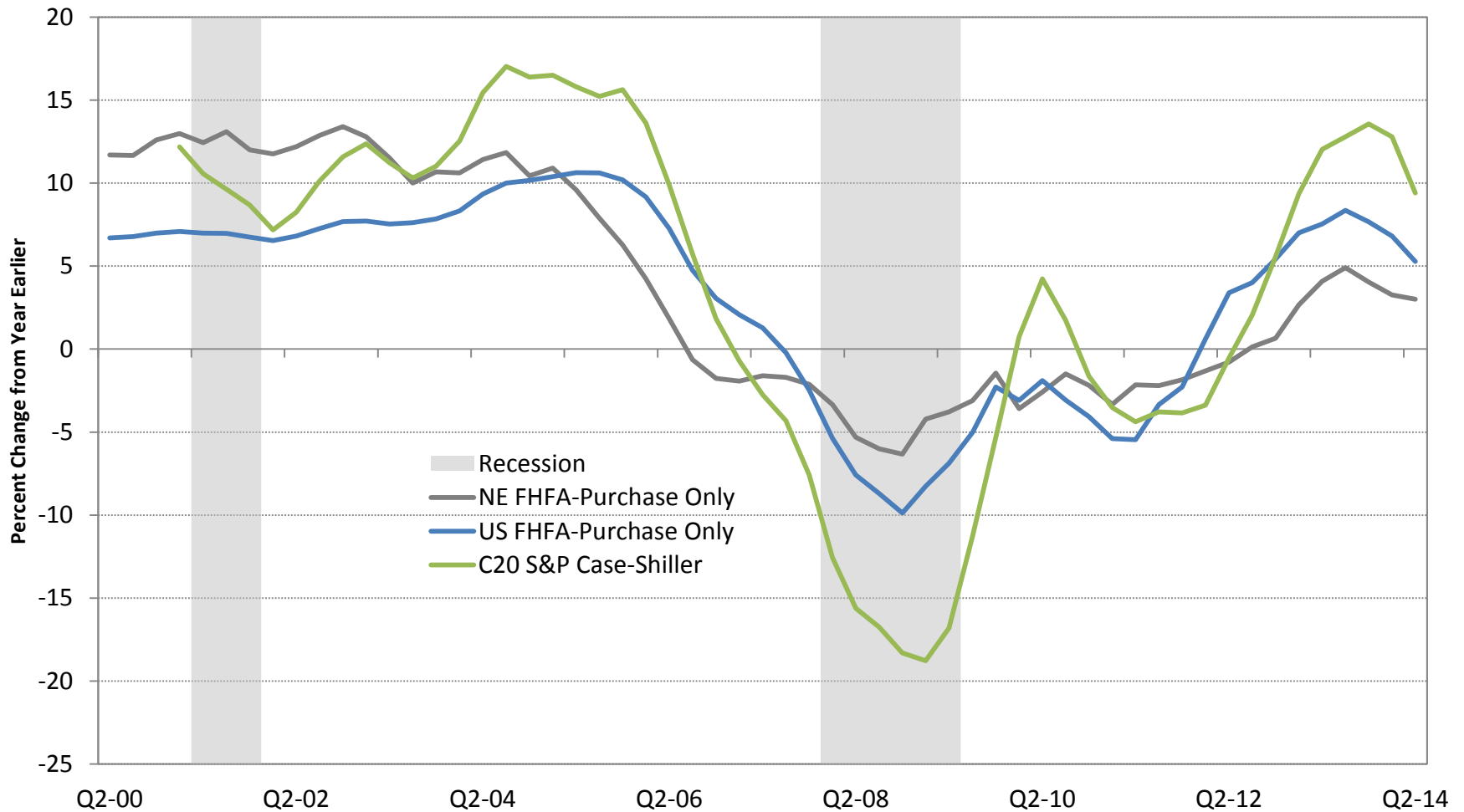


Foreclosures Started

All Loans



Repeat-Sales Home Price Index

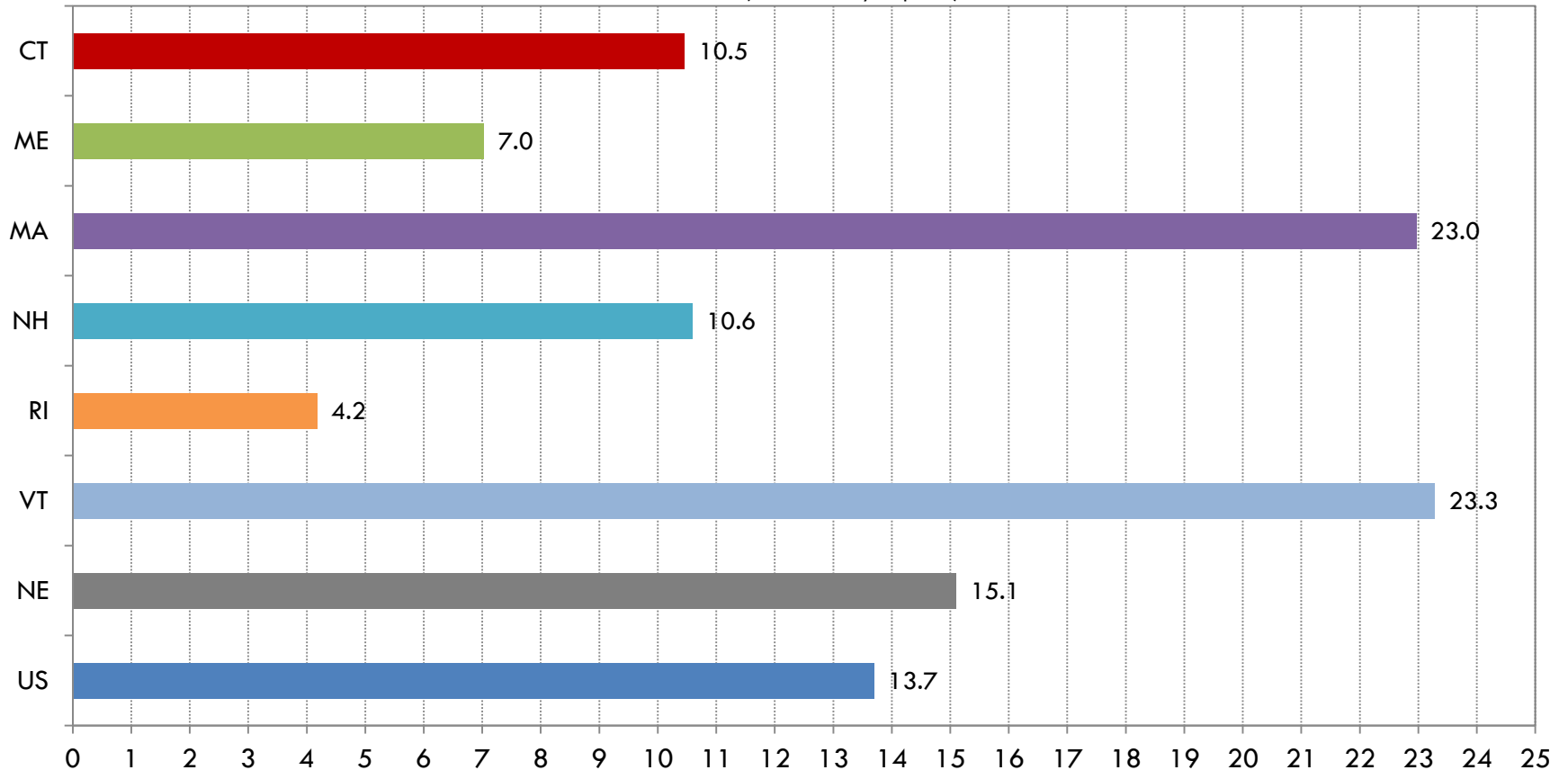


House Price Changes

(FHFA Purchase Only)

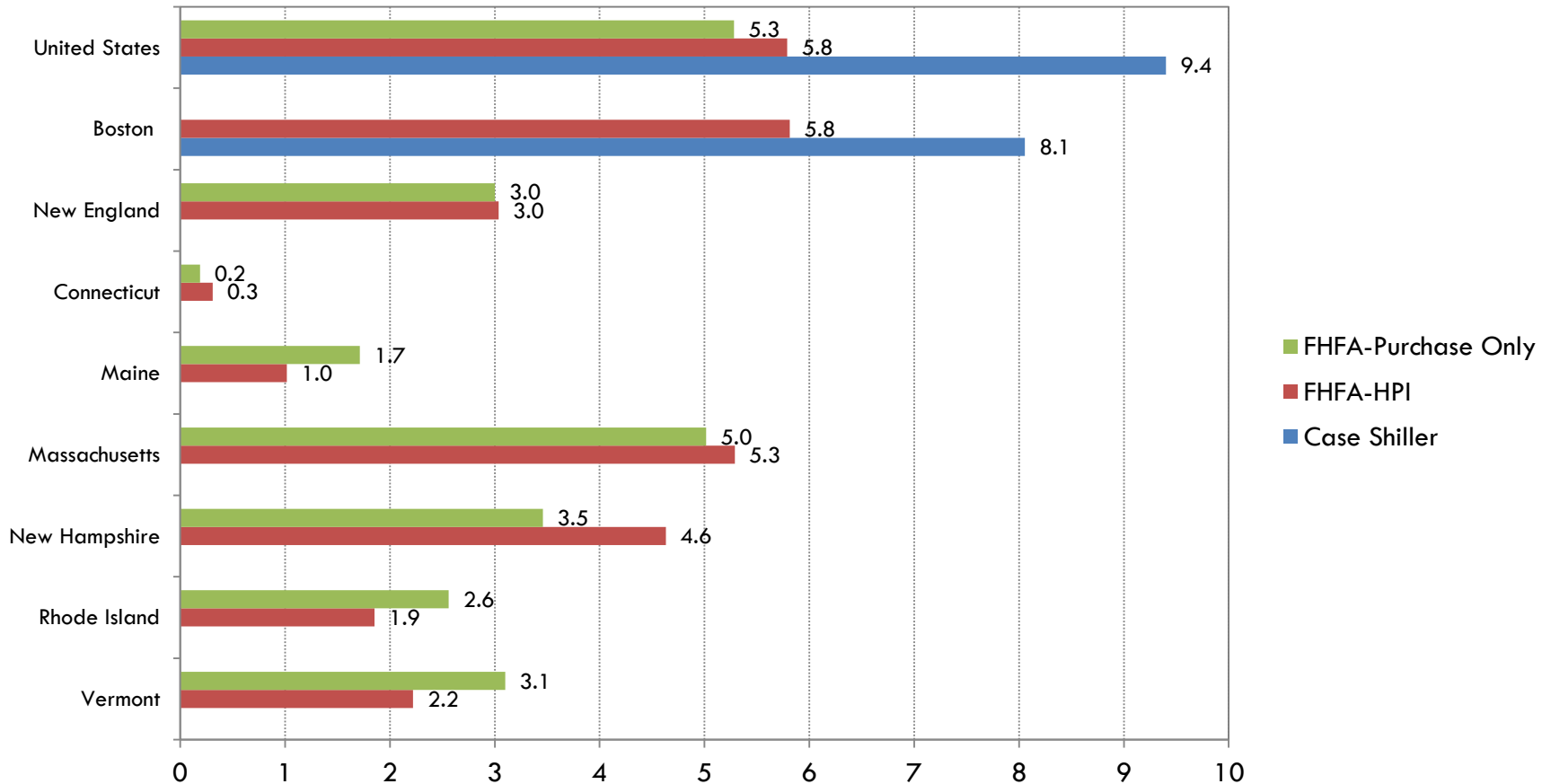
Annualized percentage change Q1 2014 - Q2 2014

(not seasonally adjusted)



House Price Changes

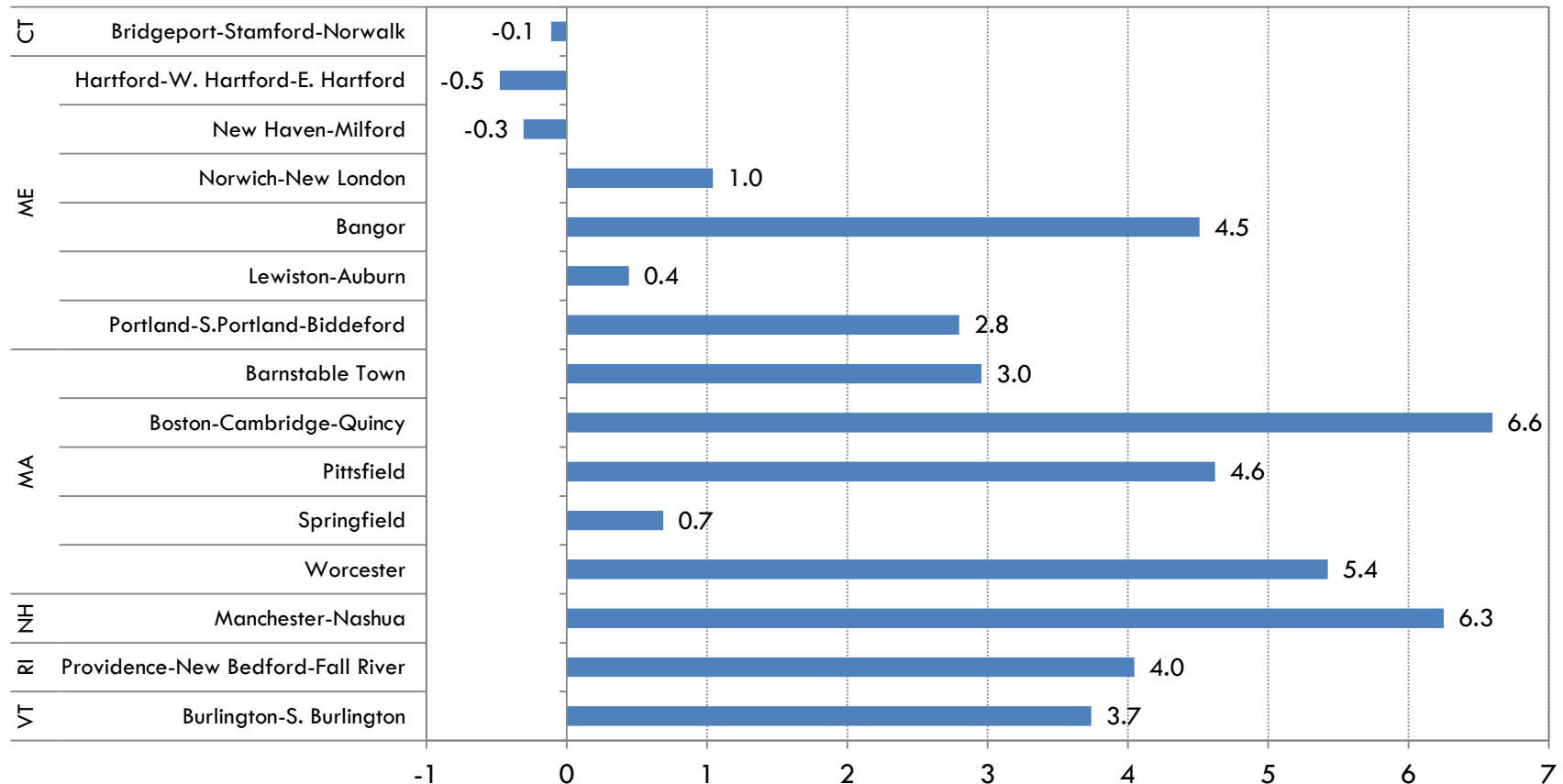
Percent Change, Q2 2013 - Q2 2014



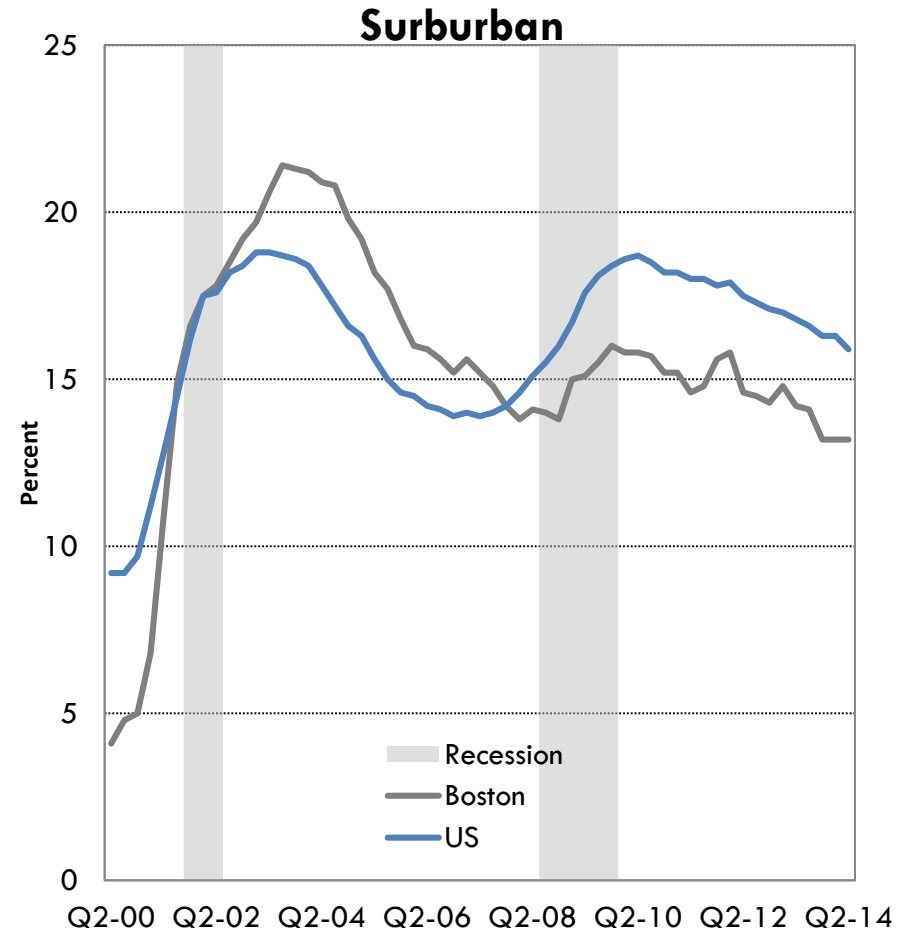
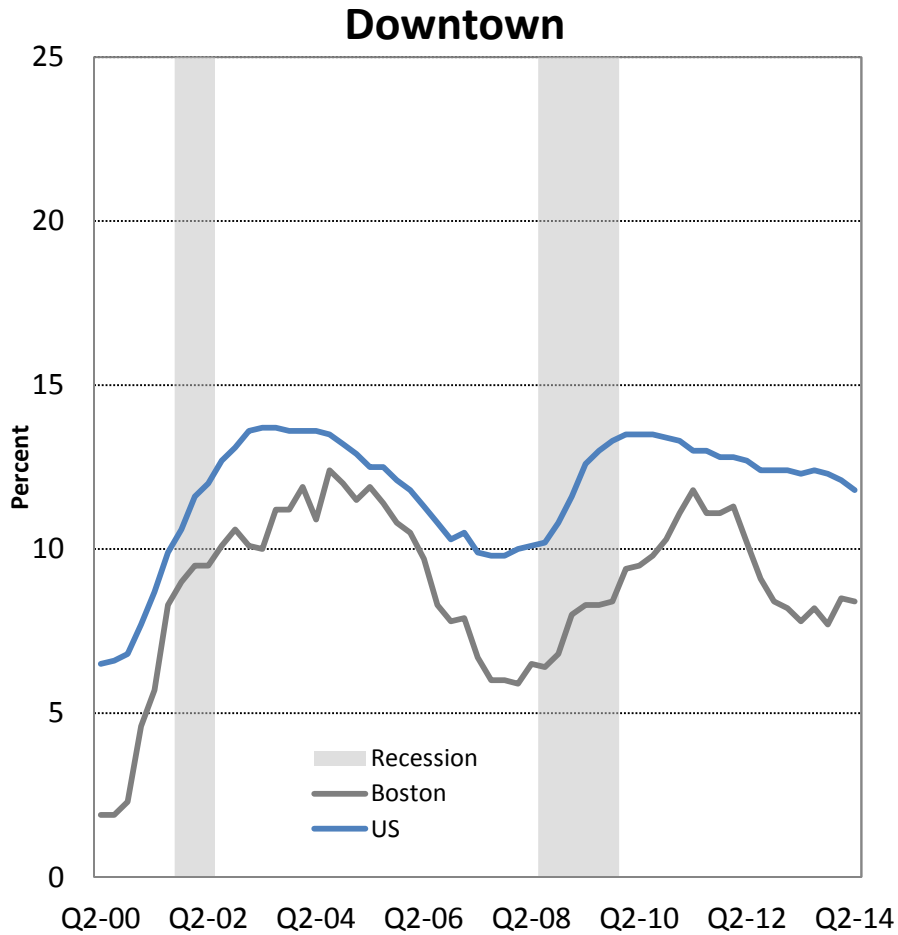
House Price Changes in New England Metropolitan Areas

(Single Family Homes)

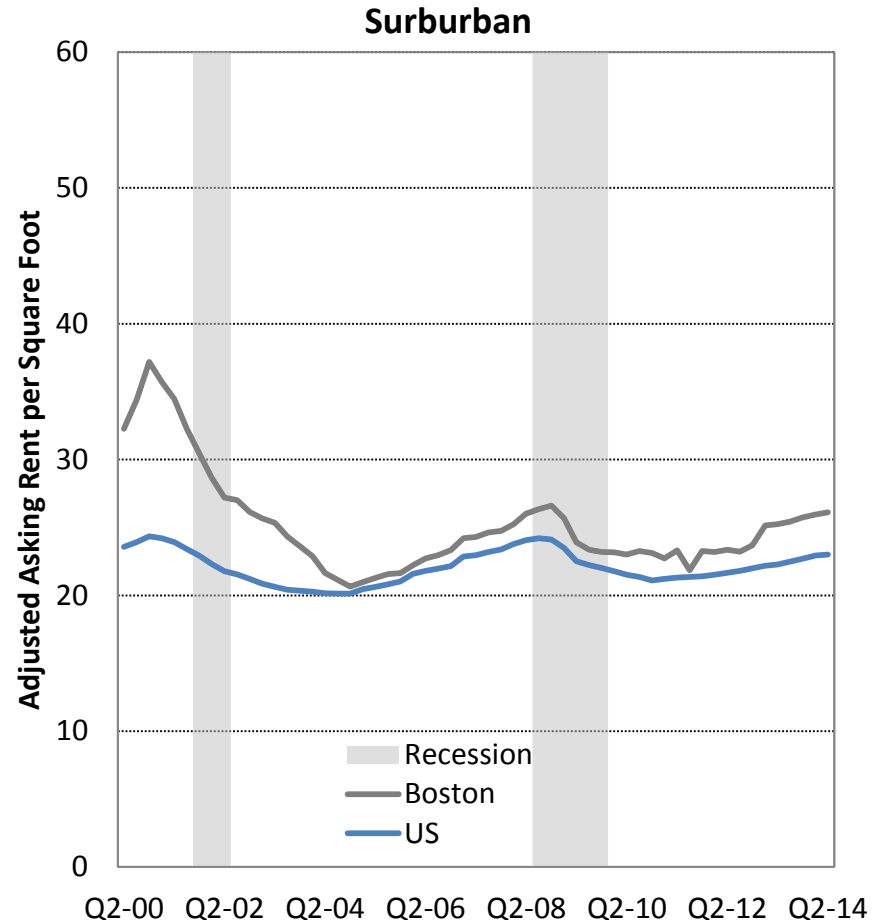
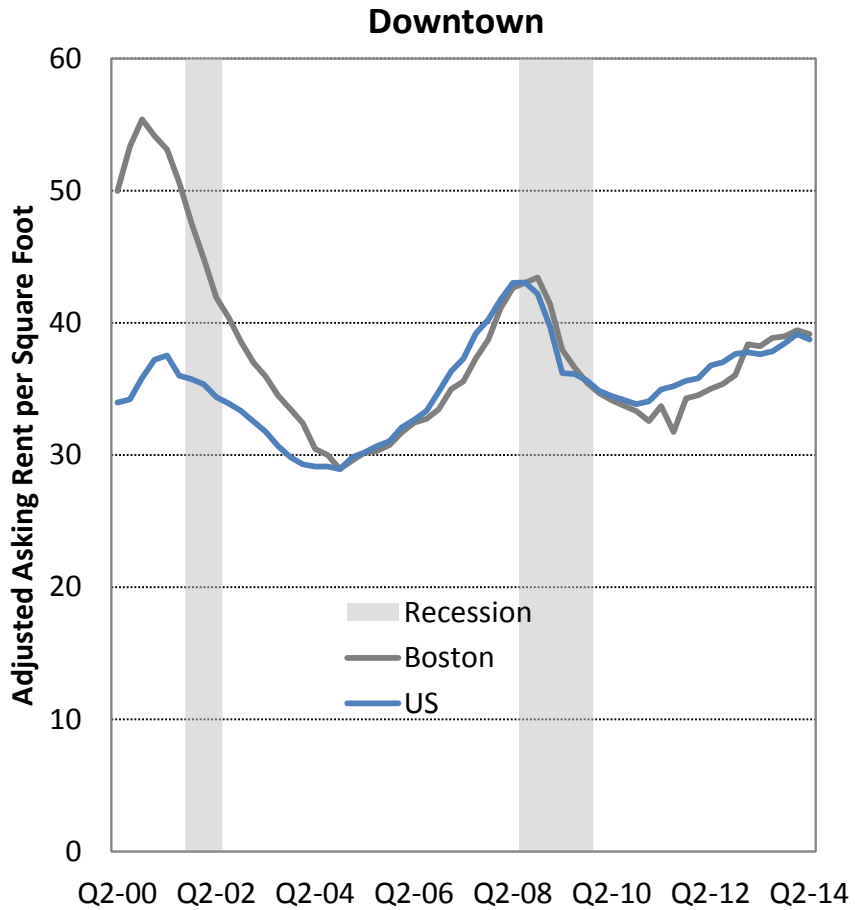
Percent Change, Q2 2013 - Q2 2014



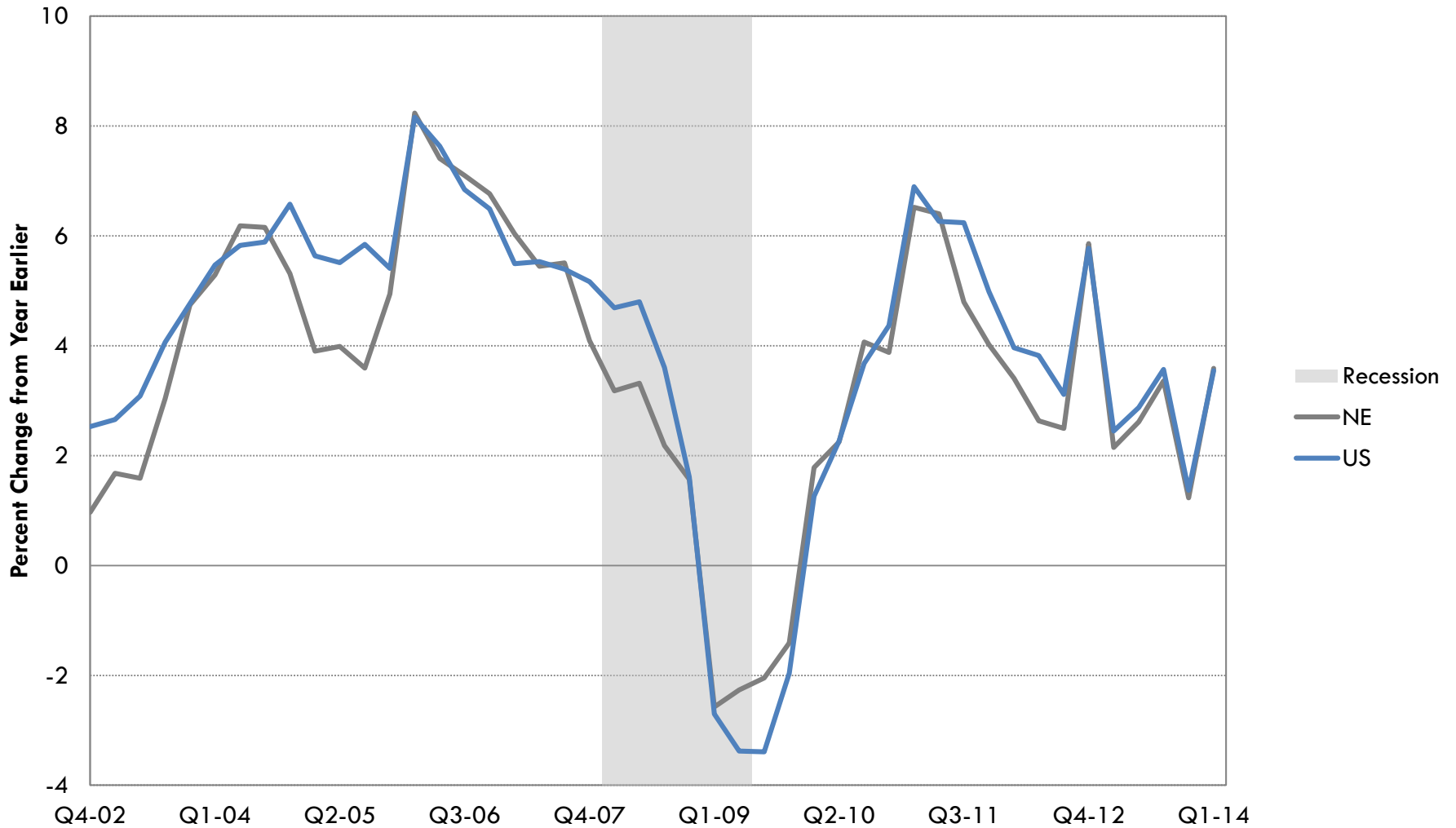
Office Vacancy Rates



Office Rents

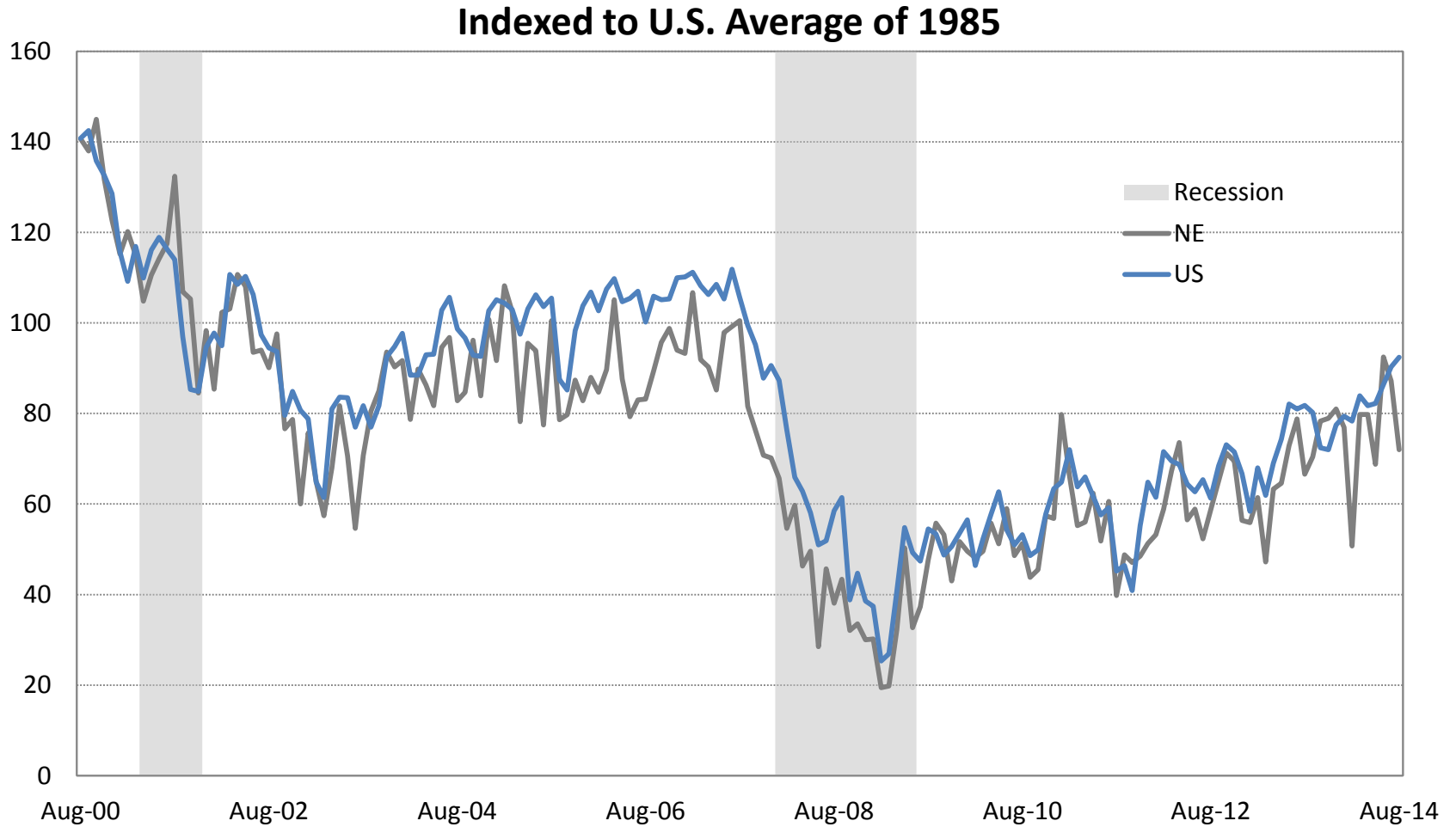


Personal Income

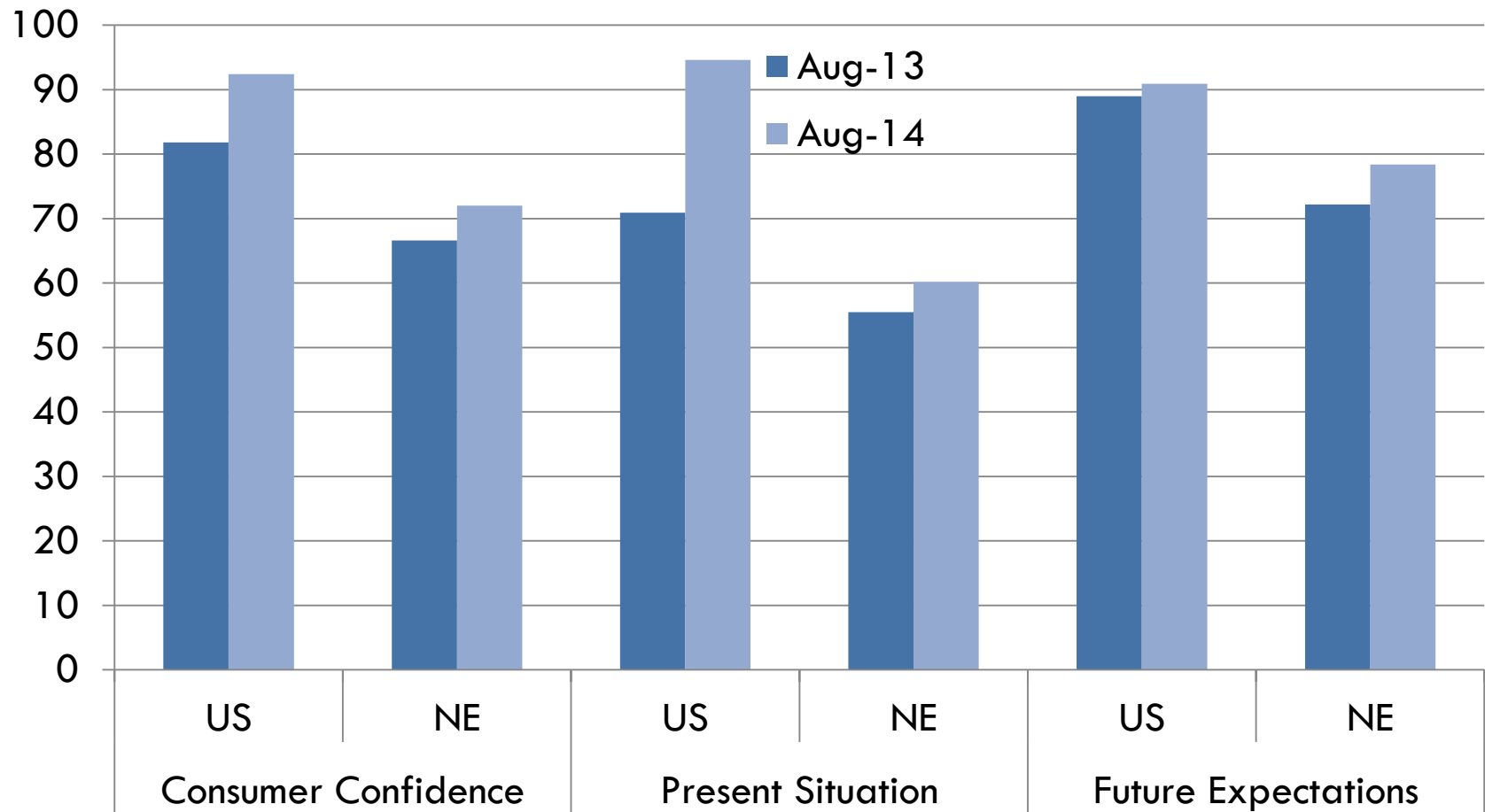


Source: Bureau of Economic Analysis, NBER, Haver Analytics

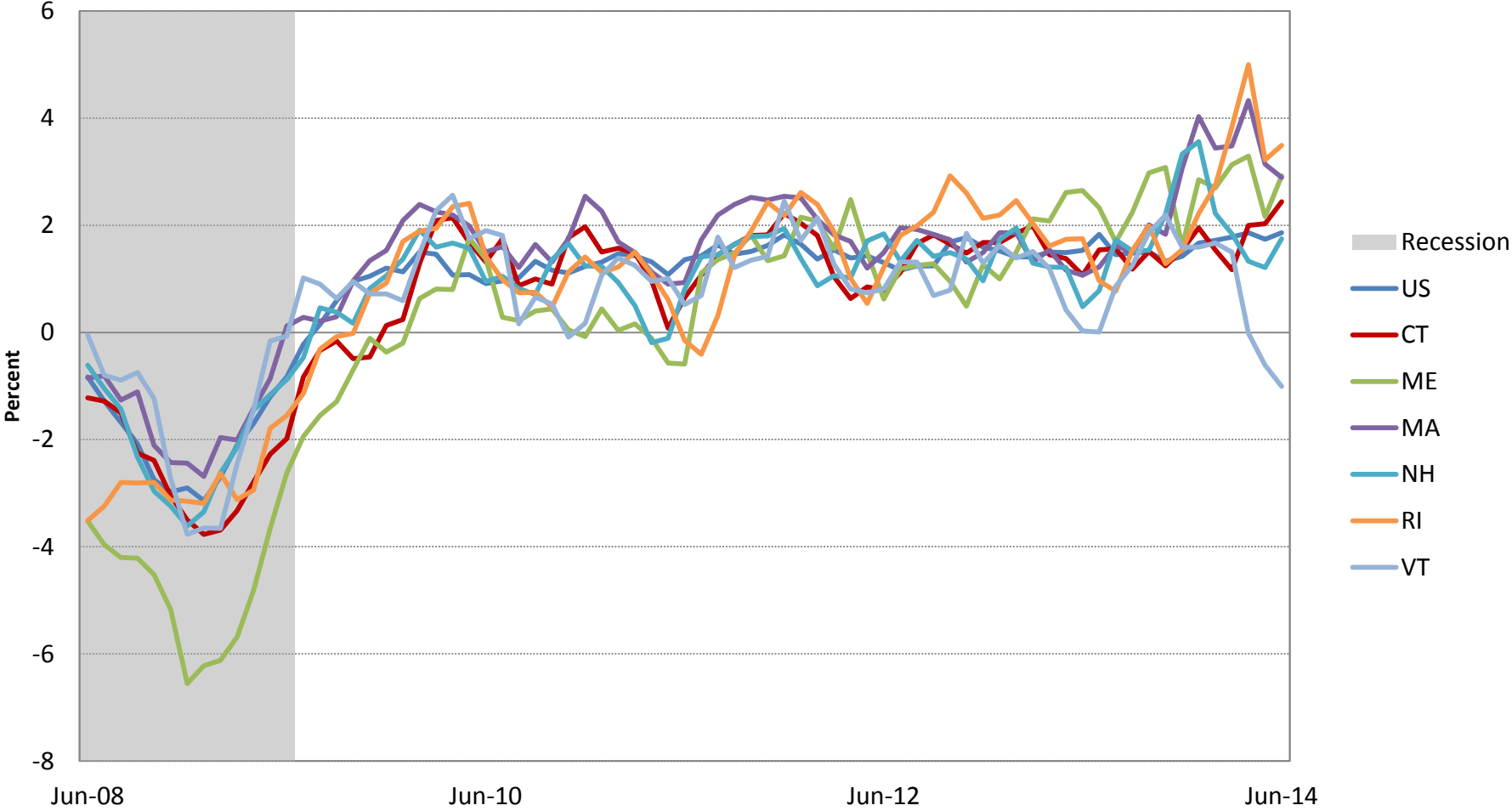
Consumer Confidence



Consumer Confidence



State Leading Economic Activity Indexes



Source: Federal Reserve Bank of Philadelphia, NBER, Haver Analytics