

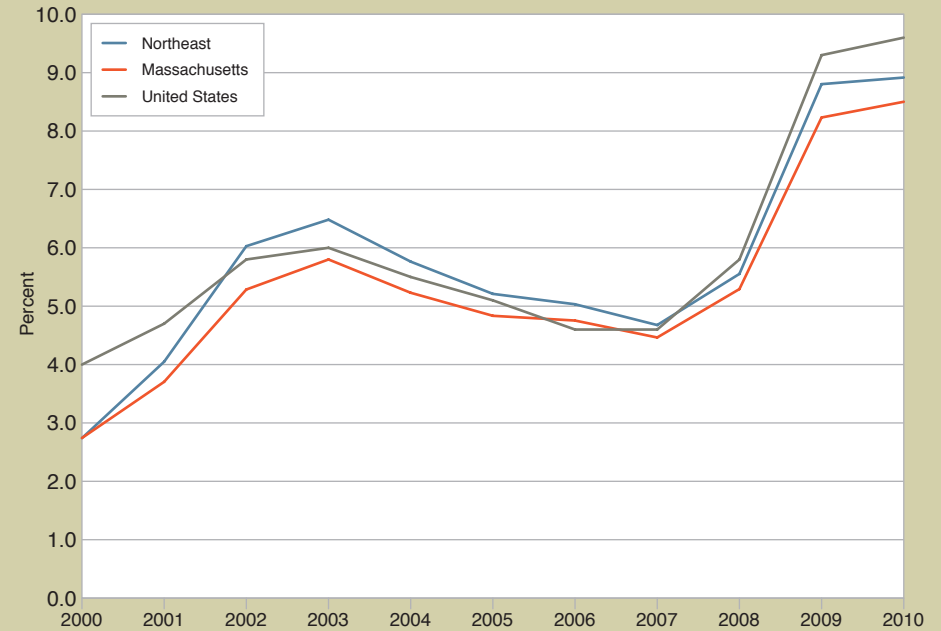
UNEMPLOYMENT RATE TRENDS

During the Great Recession, unemployment rates nationwide increased sharply. Beginning the decade at 2.7 percent, the unemployment rate in the Northeast region climbed to nearly 6.5 percent in 2003, reaching the highest rate among all regional labor markets. The rate declined in subsequent years to 4.6 percent in 2007. In the Great Recession, the region's unemployment rate jumped again, reaching 8.9 percent in 2010, but it has moved to the middle of the pack among regional labor markets.

Source: US Bureau of Labor Statistics and Massachusetts Executive Office of Labor and Workforce Development.

Note: The annual unemployment rate is a 12-month average of the non-seasonally-adjusted unemployment rate.

Unemployment Rate, 2000 to 2010



Northeast Region Unemployment Rate

	2000	2010	Relative Change	Annual Growth Rate (Percent)
Unemployed	14,187	47,606	33,419	12.9
Employed	503,513	486,305	-17,208	-0.3
Civilian Labor Force	517,700	533,911	16,211	0.3
Unemployment Rate	2.7	8.9	-	-