

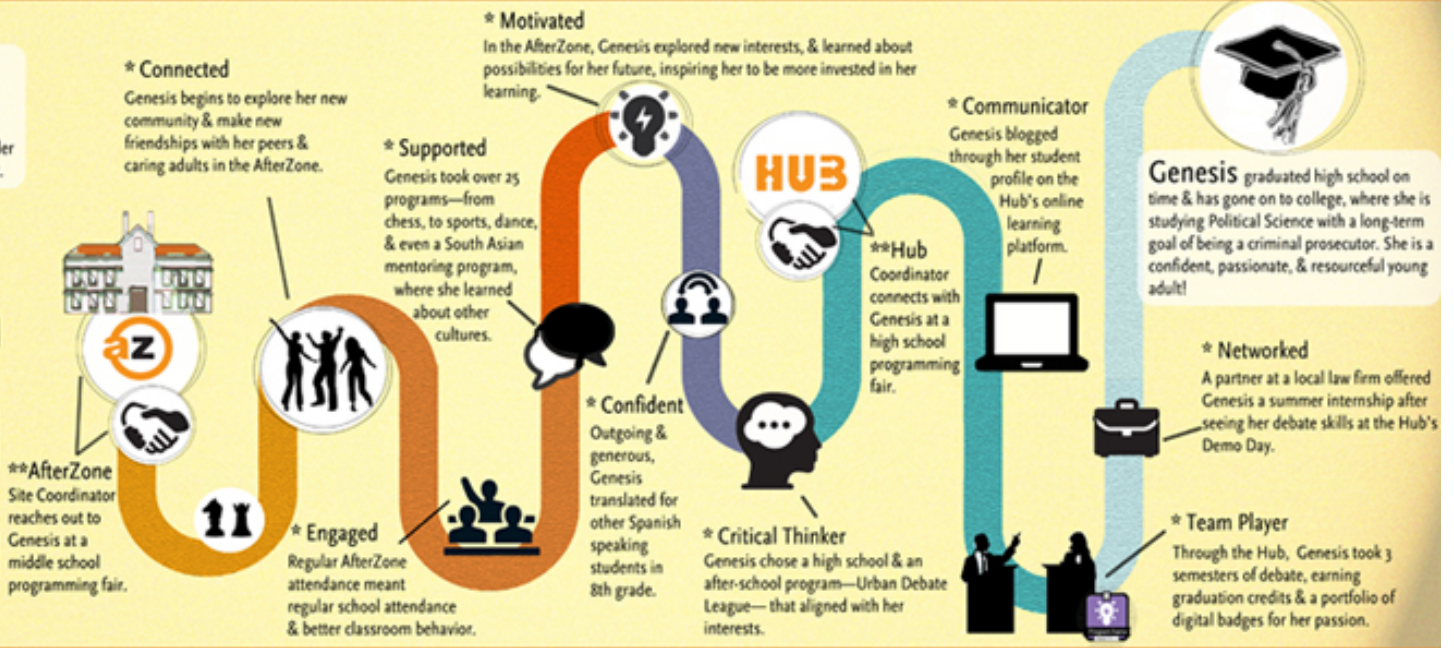
# A New Vision for Workforce Preparation

January 20, 2015

# PASA's Learning Pathways: Ushering Students from Middle School Through High School Graduation

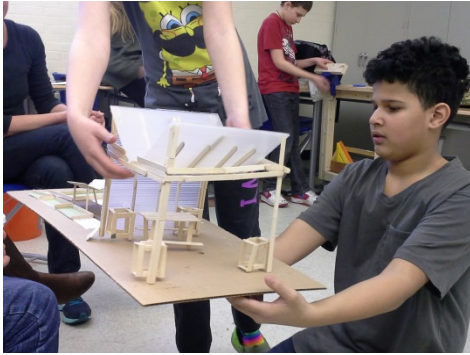
## This is Genesis

She spoke very little English when she moved to the U.S. from the Dominican Republic in middle school. As a 6th grader at Roger Williams, she was shy and quiet.

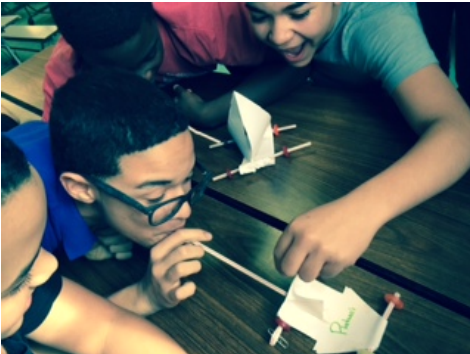


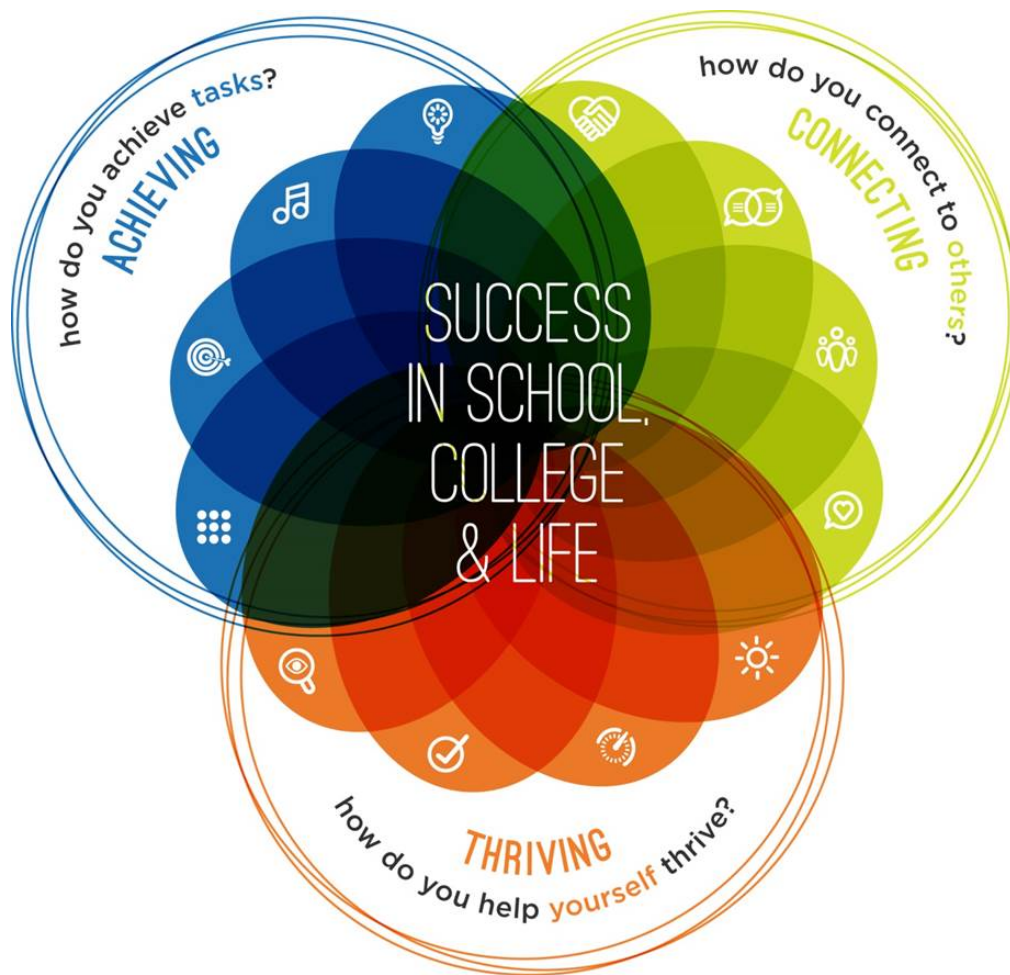
# PASA's Graduate Profile

*Essential competencies that equip everyone for college, career and life*



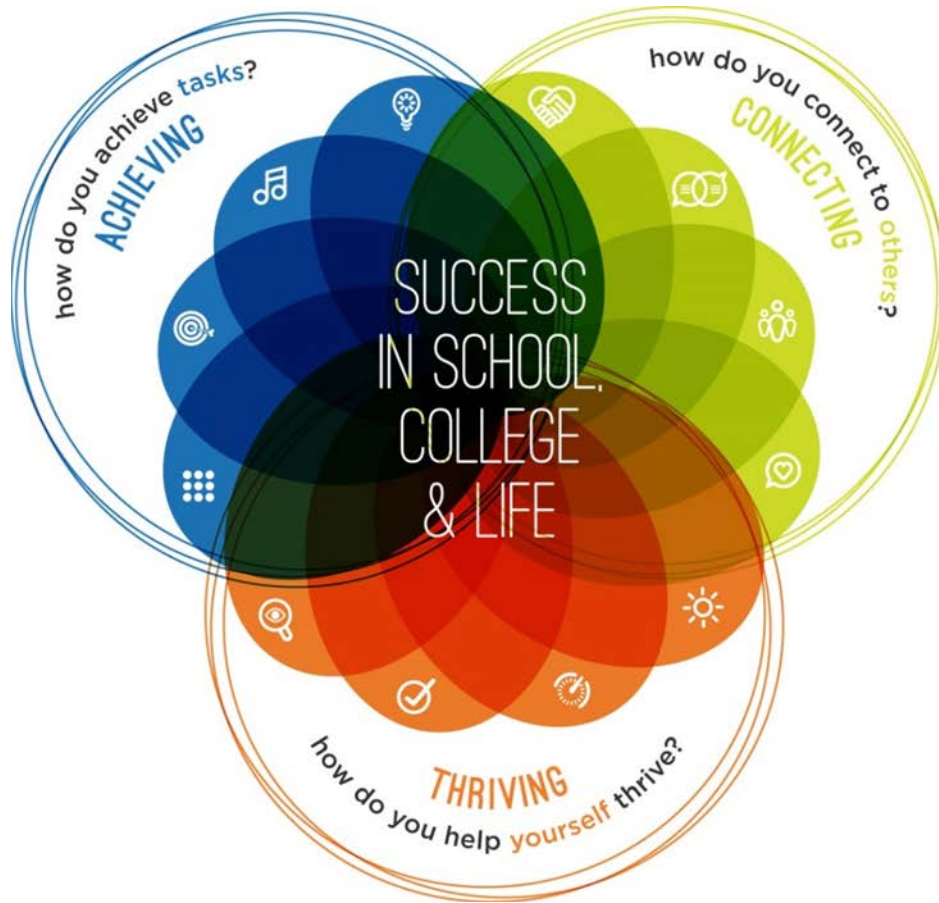
- ▶ Critical thinking and problem solving skills
- ▶ Communications skills
- ▶ Team work
- ▶ Perseverance and resourcefulness
- ▶ Engaged in lifelong learning





<b>ACHIEVING</b>	 critical thinking
	 creativity
	 goal focus
	 organization
<b>CONNECTING</b>	 relationships
	 communication
	 teamwork
	 respect
<b>THRIVING</b>	 wellbeing
	 drive
	 efficacy
	 awareness of self & others

# Competencies needed to practice STEM



ACHIEVING	critical thinking	★
	creativity	★
	goal focus	
	organization	★
CONNECTING	relationships	
	communication	★
	teamwork	★
	respect	
THRIVING	wellbeing	
	drive	★
	efficacy	
	awareness of self & others	

# ACT: Logic Model

